

**ALDH2 Antibody**  
Rabbit mAb  
Catalog # AP93176

## Specification

---

### ALDH2 Antibody - Product Information

Application	WB
Primary Accession	<a href="#">P05091</a>
Reactivity	Rat
Clonality	Monoclonal

#### Other Names

Acetaldehyde dehydrogenase 2; ALDH class 2; ALDH E2; Aldh2; ALDHI; ALDM; Liver mitochondrial ALDH; Mitochondrial aldehyde dehydrogenase 2; MS767;

Isotype	Rabbit IgG
Host	Rabbit
Calculated MW	56381 Da

### ALDH2 Antibody - Additional Information

Purification	Affinity-chromatography
Immunogen	A synthesized peptide derived from human ALDH2
Description	Required for clearance of cellular formaldehyde, a cytotoxic and carcinogenic metabolite that induces DNA damage.
Storage Condition and Buffer	Rabbit IgG in phosphate buffered saline , pH 7.4, 150mM NaCl, 0.02% sodium azide and 50% glycerol. Store at +4°C short term. Store at -20°C long term. Avoid freeze / thaw cycle.

### ALDH2 Antibody - Protein Information

**Name** ALDH2

**Synonyms** ALDM

#### Function

Required for clearance of cellular formaldehyde, a cytotoxic and carcinogenic metabolite that induces DNA damage.

#### Cellular Location

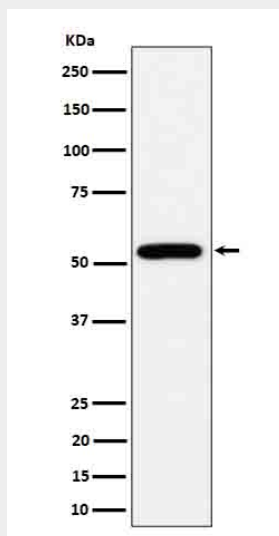
Mitochondrion matrix.

### ALDH2 Antibody - Protocols

Provided below are standard protocols that you may find useful for product applications.

- [Western Blot](#)
- [Blocking Peptides](#)
- [Dot Blot](#)
- [Immunohistochemistry](#)
- [Immunofluorescence](#)
- [Immunoprecipitation](#)
- [Flow Cytometry](#)
- [Cell Culture](#)

#### ALDH2 Antibody - Images



Western blot analysis of ALDH2 expression in HepG2 cell lysate.