

C1QA Antibody
Rabbit mAb
Catalog # AP93161**Specification**

C1QA Antibody - Product InformationApplication
Primary Accession
Reactivity
Clonality**WB, IHC**
[P02745](#)
Rat
Monoclonal**Other Names**

C1qa; Complement C1q subcomponent subunit A; Complement component 1 q subcomponent A chain; Complement component 1 q subcomponent alpha polypeptide;

Isotype
Host
Calculated MW**Rabbit IgG**
Rabbit
26017 Da**C1QA Antibody - Additional Information**Purification
Immunogen**Affinity-chromatography**
A synthesized peptide derived from human C1QA

Description

C1q associates with the proenzymes C1r and C1s to yield C1, the first component of the serum complement system. The collagen-like regions of C1q interact with the Ca(2+)-dependent C1r(2)C1s(2) proenzyme complex, and efficient activation of C1 takes place on interaction of the globular heads of C1q with the Fc regions of IgG or IgM antibody present in immune complexes.

Storage Condition and Buffer

Rabbit IgG in phosphate buffered saline , pH 7.4, 150mM NaCl, 0.02% sodium azide and 50% glycerol. Store at +4°C short term. Store at -20°C long term. Avoid freeze / thaw cycle.

C1QA Antibody - Protein Information**Name** C1QA**Function**

C1q associates with the proenzymes C1r and C1s to yield C1, the first component of the serum complement system. The collagen-like regions of C1q interact with the Ca(2+)-dependent C1r(2)C1s(2) proenzyme complex, and efficient activation of C1 takes place on interaction of the globular heads of C1q with the Fc regions of IgG or IgM antibody present in immune complexes.

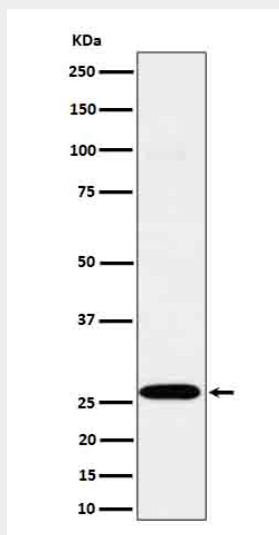
Cellular Location
Secreted.

C1QA Antibody - Protocols

Provided below are standard protocols that you may find useful for product applications.

- [Western Blot](#)
- [Blocking Peptides](#)
- [Dot Blot](#)
- [Immunohistochemistry](#)
- [Immunofluorescence](#)
- [Immunoprecipitation](#)
- [Flow Cytometry](#)
- [Cell Culture](#)

C1QA Antibody - Images



Western blot analysis of C1QA expression in C6 cell lysate.