

TFIIE alpha Antibody
Rabbit mAb
Catalog # AP93157

Specification

TFIIE alpha Antibody - Product Information

Application	WB, IHC
Primary Accession	P29083
Reactivity	Rat
Clonality	Monoclonal
Other Names	
Gtf2e1; TF2E1; TFIIE alpha;	
Isotype	Rabbit IgG
Host	Rabbit
Calculated MW	49452 Da

TFIIE alpha Antibody - Additional Information

Purification	Affinity-chromatography
Immunogen	A synthesized peptide derived from human TFIIE alpha
Description	Recruits TFIIH to the initiation complex and stimulates the RNA polymerase II C-terminal domain kinase and DNA-dependent ATPase activities of TFIIH. Both TFIIH and TFIIE are required for promoter clearance by RNA polymerase.
Storage Condition and Buffer	Rabbit IgG in phosphate buffered saline , pH 7.4, 150mM NaCl, 0.02% sodium azide and 50% glycerol. Store at +4°C short term. Store at -20°C long term. Avoid freeze / thaw cycle.

TFIIE alpha Antibody - Protein Information

Name GTF2E1

Synonyms TF2E1

Function

Recruits TFIIH to the initiation complex and stimulates the RNA polymerase II C-terminal domain kinase and DNA-dependent ATPase activities of TFIIH. Both TFIIH and TFIIE are required for promoter clearance by RNA polymerase.

Cellular Location

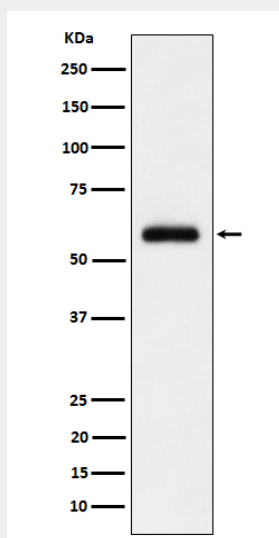
Nucleus

TFIIIE alpha Antibody - Protocols

Provided below are standard protocols that you may find useful for product applications.

- [Western Blot](#)
- [Blocking Peptides](#)
- [Dot Blot](#)
- [Immunohistochemistry](#)
- [Immunofluorescence](#)
- [Immunoprecipitation](#)
- [Flow Cytometry](#)
- [Cell Culture](#)

TFIIIE alpha Antibody - Images



Western blot analysis of TFIIIE alpha expression in HeLa cell lysate.