

CXCR6 / CD186 Antibody
Rabbit mAb
Catalog # AP93156

Specification

CXCR6 / CD186 Antibody - Product Information

Application	WB
Primary Accession	O00574
Clonality	Monoclonal
Other Names	
bonzo; CD186; CDw186; CXCR6; STRL33; TYMSTR;	
Isotype	Rabbit IgG
Host	Rabbit
Calculated MW	39280 Da

CXCR6 / CD186 Antibody - Additional Information

Purification	Affinity-chromatography
Immunogen	A synthesized peptide derived from human CXCR6 / CD186
Description	Receptor for the C-X-C chemokine CXCL16. Used as a coreceptor by SIVs and by strains of HIV-2 and m-tropic HIV-1.
Storage Condition and Buffer	Rabbit IgG in phosphate buffered saline , pH 7.4, 150mM NaCl, 0.02% sodium azide and 50% glycerol. Store at +4°C short term. Store at -20°C long term. Avoid freeze / thaw cycle.

CXCR6 / CD186 Antibody - Protein Information

Name CXCR6

Synonyms BONZO, STRL33, TYMSTR

Function

Receptor for the C-X-C chemokine CXCL16. Used as a coreceptor by SIVs and by strains of HIV-2 and m-tropic HIV-1.

Cellular Location

Cell membrane; Multi-pass membrane protein.

Tissue Location

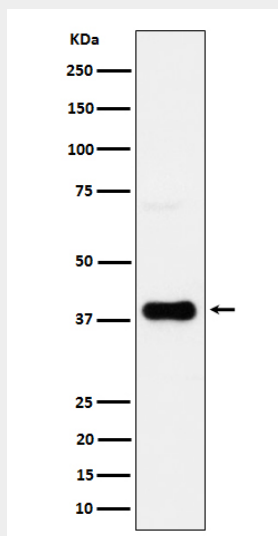
Expressed in lymphoid tissues and activated T cells

CXCR6 / CD186 Antibody - Protocols

Provided below are standard protocols that you may find useful for product applications.

- [Western Blot](#)
- [Blocking Peptides](#)
- [Dot Blot](#)
- [Immunohistochemistry](#)
- [Immunofluorescence](#)
- [Immunoprecipitation](#)
- [Flow Cytometry](#)
- [Cell Culture](#)

CXCR6 / CD186 Antibody - Images



Western blot analysis of CXCR6/CD186 expression in JAR cell lysate.