

**HoxC6 Antibody**  
Rabbit mAb  
Catalog # AP93145

## Specification

---

### HoxC6 Antibody - Product Information

Application	WB
Primary Accession	<a href="#">P09630</a>
Reactivity	Rat
Clonality	Monoclonal
<b>Other Names</b>	
CP25 ; HOX3; HOX3C; Hoxc6;	
Isotype	Rabbit IgG
Host	Rabbit
Calculated MW	26915 Da

### HoxC6 Antibody - Additional Information

Purification	Affinity-chromatography
Immunogen	A synthesized peptide derived from human HoxC6
Description	Sequence-specific transcription factor which is part of a developmental regulatory system that provides cells with specific positional identities on the anterior-posterior axis.
Storage Condition and Buffer	Rabbit IgG in phosphate buffered saline , pH 7.4, 150mM NaCl, 0.02% sodium azide and 50% glycerol. Store at +4°C short term. Store at -20°C long term. Avoid freeze / thaw cycle.

### HoxC6 Antibody - Protein Information

**Name** HOXC6

**Synonyms** HOX3C

#### Function

Sequence-specific transcription factor which is part of a developmental regulatory system that provides cells with specific positional identities on the anterior-posterior axis.

#### Cellular Location

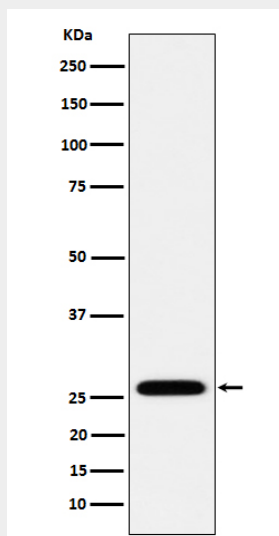
Nucleus.

### HoxC6 Antibody - Protocols

Provided below are standard protocols that you may find useful for product applications.

- [Western Blot](#)
- [Blocking Peptides](#)
- [Dot Blot](#)
- [Immunohistochemistry](#)
- [Immunofluorescence](#)
- [Immunoprecipitation](#)
- [Flow Cytometry](#)
- [Cell Culture](#)

#### HoxC6 Antibody - Images



Western blot analysis of HoxC6 expression in MCF7 cell lysate.