

**Phospho-Vimentin (S39) Antibody**  
Rabbit mAb  
Catalog # AP93139

**Specification**

---

**Phospho-Vimentin (S39) Antibody - Product Information**

Application	WB
Primary Accession	<a href="#">P08670</a>
Reactivity	Rat
Clonality	Monoclonal
<b>Other Names</b>	
VIM; VIME; Vimentin;	
Isotype	Rabbit IgG
Host	Rabbit
Calculated MW	53652 Da

**Phospho-Vimentin (S39) Antibody - Additional Information**

Purification	Affinity-chromatography
Immunogen	A synthesized peptide derived from human Phospho-Vimentin (S39)
Description	Vimentin an intermediate filament protein. Intermediate filament proteins are expressed in a tissue-specific manner. Desmin is the subunit specific for muscle and vimentin the subunit specific for mesenchymal tissue.
Storage Condition and Buffer	Rabbit IgG in phosphate buffered saline , pH 7.4, 150mM NaCl, 0.02% sodium azide and 50% glycerol. Store at +4°C short term. Store at -20°C long term. Avoid freeze / thaw cycle.

**Phospho-Vimentin (S39) Antibody - Protein Information**

Name VIM ([HGNC:12692](#))

**Function**

Vimentins are class-III intermediate filaments found in various non-epithelial cells, especially mesenchymal cells. Vimentin is attached to the nucleus, endoplasmic reticulum, and mitochondria, either laterally or terminally. Plays a role in cell directional movement, orientation, cell sheet organization and Golgi complex polarization at the cell migration front (By similarity). Protects SCRIB from proteasomal degradation and facilitates its localization to intermediate filaments in a cell contact-mediated manner (By similarity).

**Cellular Location**

Cytoplasm. Cytoplasm, cytoskeleton. Nucleus matrix {ECO:0000250|UniProtKB:P31000}. Cell membrane {ECO:0000250|UniProtKB:P20152}

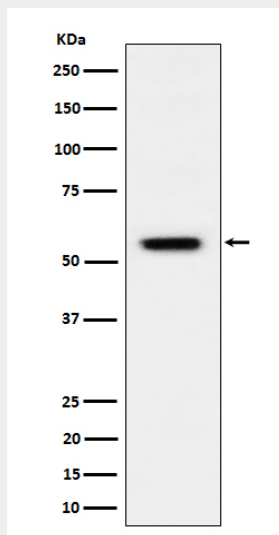
**Tissue Location**

Highly expressed in fibroblasts, some expression in T- and B-lymphocytes, and little or no expression in Burkitt's lymphoma cell lines. Expressed in many hormone-independent mammary carcinoma cell lines.

**Phospho-Vimentin (S39) Antibody - Protocols**

Provided below are standard protocols that you may find useful for product applications.

- [Western Blot](#)
- [Blocking Peptides](#)
- [Dot Blot](#)
- [Immunohistochemistry](#)
- [Immunofluorescence](#)
- [Immunoprecipitation](#)
- [Flow Cytometry](#)
- [Cell Culture](#)

**Phospho-Vimentin (S39) Antibody - Images**

Western blot analysis of Phospho-Vimentin (S39) expression in HeLa treated with Calyculin A cell lysate.