

PDGF B Antibody
Rabbit mAb
Catalog # AP93138

Specification

PDGF B Antibody - Product Information

Application	WB
Primary Accession	P01127
Reactivity	Rat
Clonality	Monoclonal

Other Names

PDGF2; Pdgfb; Platelet derived growth factor 2; Platelet derived growth factor B chain; Platelet derived growth factor beta; SIS; SSV;

Isotype	Rabbit IgG
Host	Rabbit
Calculated MW	27283 Da

PDGF B Antibody - Additional Information

Purification	Affinity-chromatography
Immunogen	A synthesized peptide derived from human PDGF B
Description	Growth factor that plays an essential role in the regulation of embryonic development, cell proliferation, cell migration, survival and chemotaxis. Potent mitogen for cells of mesenchymal origin (PubMed:26599395).
Storage Condition and Buffer	Rabbit IgG in phosphate buffered saline , pH 7.4, 150mM NaCl, 0.02% sodium azide and 50% glycerol. Store at +4°C short term. Store at -20°C long term. Avoid freeze / thaw cycle.

PDGF B Antibody - Protein Information

Name PDGFB

Synonyms PDGF2, SIS

Function

Growth factor that plays an essential role in the regulation of embryonic development, cell proliferation, cell migration, survival and chemotaxis. Potent mitogen for cells of mesenchymal origin (PubMed: [26599395](http://www.uniprot.org/citations/26599395)). Required for normal proliferation and recruitment of pericytes and vascular smooth muscle cells in the central nervous system, skin, lung, heart and placenta. Required for normal blood vessel development, and for normal development of kidney glomeruli. Plays an important role in wound healing. Signaling is modulated by the formation of heterodimers

with PDGFA (By similarity).

Cellular Location

Secreted. Note=Released by platelets upon wounding

Tissue Location

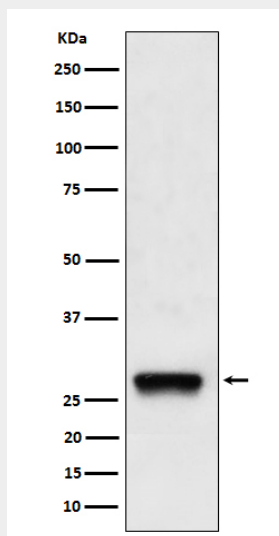
Expressed at high levels in the heart, brain (sustantia nigra), placenta and fetal kidney. Expressed at moderate levels in the brain (hippocampus), skeletal muscle, kidney and lung

PDGF B Antibody - Protocols

Provided below are standard protocols that you may find useful for product applications.

- [Western Blot](#)
- [Blocking Peptides](#)
- [Dot Blot](#)
- [Immunohistochemistry](#)
- [Immunofluorescence](#)
- [Immunoprecipitation](#)
- [Flow Cytometry](#)
- [Cell Culture](#)

PDGF B Antibody - Images



Western blot analysis of PDGF B expression in A375 cell lysate.