

HN1 Antibody
Rabbit mAb
Catalog # AP93131

Specification

HN1 Antibody - Product Information

Application	WB, FC
Primary Accession	O9UK76
Reactivity	Rat
Clonality	Monoclonal
Other Names	
ARM2; HN1; HN1A;	
Isotype	Rabbit IgG
Host	Rabbit
Calculated MW	16015 Da

HN1 Antibody - Additional Information

Purification	Affinity-chromatography
Immunogen	A synthesized peptide derived from human HN1
Description	Modulates negatively AKT-mediated GSK3B signaling (PubMed:21323578, PubMed:22155408).
Storage Condition and Buffer	Rabbit IgG in phosphate buffered saline , pH 7.4, 150mM NaCl, 0.02% sodium azide and 50% glycerol. Store at +4°C short term. Store at -20°C long term. Avoid freeze / thaw cycle.

HN1 Antibody - Protein Information

Name JPT1 ([HGNC:14569](#))

Function

Modulates negatively AKT-mediated GSK3B signaling (PubMed: [21323578](http://www.uniprot.org/citations/21323578), PubMed: [22155408](http://www.uniprot.org/citations/22155408)). Induces CTNNB1 'Ser-33' phosphorylation and degradation through the suppression of the inhibitory 'Ser-9' phosphorylation of GSK3B, which represses the function of the APC:CTNNB1:GSK3B complex and the interaction with CDH1/E-cadherin in adherent junctions (PubMed: [25169422](http://www.uniprot.org/citations/25169422)). Plays a role in the regulation of cell cycle and cell adhesion (PubMed: [25169422](http://www.uniprot.org/citations/25169422), PubMed: [25450365](http://www.uniprot.org/citations/25450365)). Has an inhibitory role on AR-signaling pathway through the induction of receptor proteasomal degradation (PubMed: [22155408](http://www.uniprot.org/citations/22155408)).

Cellular Location

Nucleus. Cytoplasm

Tissue Location

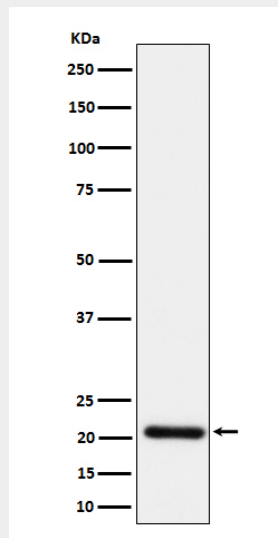
Expressed in testis, skeletal muscle, thymus, prostate, colon, peripheral blood cells, brain and placenta

HN1 Antibody - Protocols

Provided below are standard protocols that you may find useful for product applications.

- [Western Blot](#)
- [Blocking Peptides](#)
- [Dot Blot](#)
- [Immunohistochemistry](#)
- [Immunofluorescence](#)
- [Immunoprecipitation](#)
- [Flow Cytometry](#)
- [Cell Culture](#)

HN1 Antibody - Images



Western blot analysis of HN1 expression in HeLa cell lysate.