

AKT1 + AKT2 + AKT3 Antibody
Rabbit mAb
Catalog # AP93128

Specification

AKT1 + AKT2 + AKT3 Antibody - Product Information

Application	WB, IHC, FC, ICC, IP
Primary Accession	P31749/P31751/Q9Y243
Reactivity	Rat
Clonality	Monoclonal
Other Names	
PKB;RAC;PRKBA;PKB-ALPHA;RAC-ALPHA; AKT1 ; AKT2; AKT3; Akt1/2/3; pan Akt;	
Isotype	Rabbit IgG
Host	Rabbit
Calculated MW	56 kDa KDa

AKT1 + AKT2 + AKT3 Antibody - Additional Information

Purification	Affinity-chromatography
Immunogen	A synthesized peptide derived from human AKT1 + AKT2 + AKT3
Description	Akt, also referred to as PKB or Rac, plays a critical role in controlling survival and apoptosis. This protein kinase is activated by insulin and various growth and survival factors to function in a wortmannin-sensitive pathway involving PI3 kinase. Akt is activated by phospholipid binding and activation loop phosphorylation at Thr308 by PDK1 and by phosphorylation within the carboxy terminus at Ser473.
Storage Condition and Buffer	Rabbit IgG in phosphate buffered saline , pH 7.4, 150mM NaCl, 0.02% sodium azide and 50% glycerol. Store at +4°C short term. Store at -20°C long term. Avoid freeze / thaw cycle.

AKT1 + AKT2 + AKT3 Antibody - Protein Information

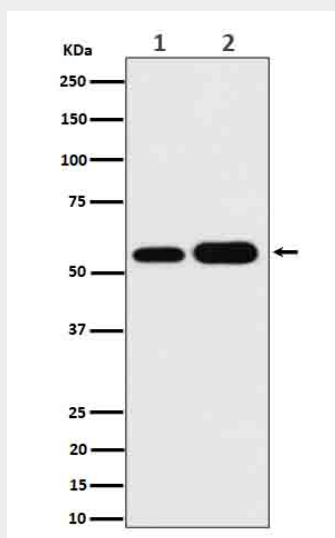
AKT1 + AKT2 + AKT3 Antibody - Protocols

Provided below are standard protocols that you may find useful for product applications.

- [Western Blot](#)
- [Blocking Peptides](#)

- [Dot Blot](#)
- [Immunohistochemistry](#)
- [Immunofluorescence](#)
- [Immunoprecipitation](#)
- [Flow Cytometry](#)
- [Cell Culture](#)

AKT1 + AKT2 + AKT3 Antibody - Images



Western blot analysis of AKT1 + AKT2 + AKT3 expression in (1) HeLa cell lysate;(2) A549 cell lysate.