

Dopamine beta Hydroxylase Antibody
Rabbit mAb
Catalog # AP93122**Specification**

Dopamine beta Hydroxylase Antibody - Product Information

Application	WB, IHC
Primary Accession	P09172
Clonality	Monoclonal
Other Names	
dbh; DBM; Dopamine beta hydroxylase; Dopamine beta monooxygenase; Soluble dopamine beta-hydroxylase;	
Isotype	Rabbit IgG
Host	Rabbit
Calculated MW	69065 Da

Dopamine beta Hydroxylase Antibody - Additional Information

Purification	Affinity-chromatography
Immunogen	A synthesized peptide derived from human Dopamine beta Hydroxylase
Description	Conversion of dopamine to noradrenaline.
Storage Condition and Buffer	Rabbit IgG in phosphate buffered saline , pH 7.4, 150mM NaCl, 0.02% sodium azide and 50% glycerol. Store at +4°C short term. Store at -20°C long term. Avoid freeze / thaw cycle.

Dopamine beta Hydroxylase Antibody - Protein Information

Name DBH

Function

Catalyzes the hydroxylation of dopamine to noradrenaline (also known as norepinephrine), and is thus vital for regulation of these neurotransmitters.

Cellular Location

[Soluble dopamine beta-hydroxylase]: Cytoplasmic vesicle, secretory vesicle lumen Cytoplasmic vesicle, secretory vesicle, chromaffin granule lumen. Secreted

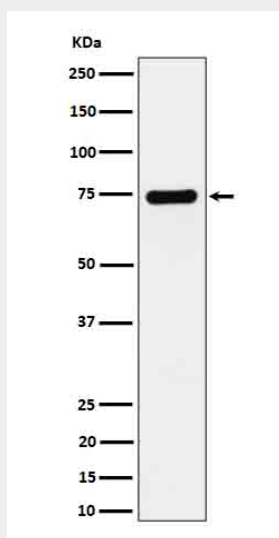
Dopamine beta Hydroxylase Antibody - Protocols

Provided below are standard protocols that you may find useful for product applications.

- [Western Blot](#)
- [Blocking Peptides](#)

- [Dot Blot](#)
- [Immunohistochemistry](#)
- [Immunofluorescence](#)
- [Immunoprecipitation](#)
- [Flow Cytometry](#)
- [Cell Culture](#)

Dopamine beta Hydroxylase Antibody - Images



Western blot analysis of Dopamine beta Hydroxylase expression in SH-SY5Y cell lysate.