

**Gamma glutamyl hydrolase Antibody**  
Rabbit mAb  
Catalog # AP93121

**Specification**

---

**Gamma glutamyl hydrolase Antibody - Product Information**

Application	WB
Primary Accession	<a href="#">O92820</a>
Clonality	Monoclonal
<b>Other Names</b>	
folylpolyglutamyl hydrolase; gamma glutamyl hydrolase; GGH;	
Isotype	Rabbit IgG
Host	Rabbit
Calculated MW	35964 Da

**Gamma glutamyl hydrolase Antibody - Additional Information**

Purification	<b>Affinity-chromatography</b>
Immunogen	<b>A synthesized peptide derived from human Gamma glutamyl hydrolase</b>
Description	<b>Hydrolyzes the polyglutamate sidechains of pteroylpolyglutamates. Progressively removes gamma-glutamyl residues from pteroylpoly-gamma-glutamate to yield pteroyl-alpha-glutamate (folic acid) and free glutamate. May play an important role in the bioavailability of dietary pteroylpolyglutamates and in the metabolism of pteroylpolyglutamates and antifolates.</b>
Storage Condition and Buffer	<b>Rabbit IgG in phosphate buffered saline , pH 7.4, 150mM NaCl, 0.02% sodium azide and 50% glycerol. Store at +4°C short term. Store at -20°C long term. Avoid freeze / thaw cycle.</b>

**Gamma glutamyl hydrolase Antibody - Protein Information**

**Name** GGH ([HGNC:4248](#))

**Function**

Hydrolyzes the polyglutamate sidechains of pteroylpolyglutamates. Progressively removes gamma-glutamyl residues from pteroylpoly-gamma-glutamate to yield pteroyl-alpha-glutamate (folic acid) and free glutamate (PubMed:[11005824](http://www.uniprot.org/citations/11005824), PubMed:[8816764](http://www.uniprot.org/citations/8816764)). May play an important role in the bioavailability of dietary pteroylpolyglutamates and in the metabolism of pteroylpolyglutamates and antifolates.

### Cellular Location

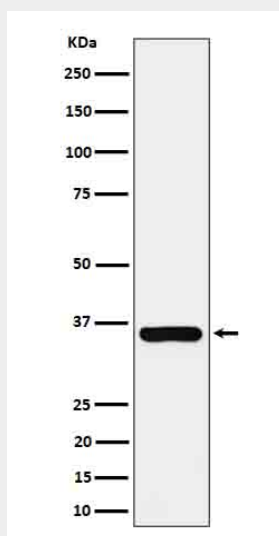
Secreted, extracellular space. Lysosome. Melanosome. Note=While its intracellular location is primarily the lysosome, most of the enzyme activity is secreted Identified by mass spectrometry in melanosome fractions from stage I to stage IV.

### Gamma glutamyl hydrolase Antibody - Protocols

Provided below are standard protocols that you may find useful for product applications.

- [Western Blot](#)
- [Blocking Peptides](#)
- [Dot Blot](#)
- [Immunohistochemistry](#)
- [Immunofluorescence](#)
- [Immunoprecipitation](#)
- [Flow Cytometry](#)
- [Cell Culture](#)

### Gamma glutamyl hydrolase Antibody - Images



Western blot analysis of Gamma glutamyl hydrolase expression in MCF7 cell lysate.