

IL12B Antibody
Rabbit mAb
Catalog # AP93117

Specification

IL12B Antibody - Product Information

| | |
|--|------------------------|
| Application | WB, FC, ICC |
| Primary Accession | P29460 |
| Clonality | Monoclonal |
| Other Names | |
| CLMF; CLMF p40; CLMF2; IL12 p40; IL12B; IMD28; IMD29; NKSF; NKSF2; | |
| Isotype | Rabbit IgG |
| Host | Rabbit |
| Calculated MW | 37169 Da |

IL12B Antibody - Additional Information

| | |
|------------------------------|---|
| Purification | Affinity-chromatography |
| Immunogen | A synthesized peptide derived from human IL12B |
| Description | Cytokine that can act as a growth factor for activated T and NK cells, enhance the lytic activity of NK/lymphokine-activated killer cells, and stimulate the production of IFN-gamma by resting PBMC. |
| Storage Condition and Buffer | Rabbit IgG in phosphate buffered saline , pH 7.4, 150mM NaCl, 0.02% sodium azide and 50% glycerol. Store at +4°C short term. Store at -20°C long term. Avoid freeze / thaw cycle. |

IL12B Antibody - Protein Information

Name IL12B

Synonyms NKSF2

Function

Cytokine that can act as a growth factor for activated T and NK cells, enhance the lytic activity of NK/lymphokine-activated killer cells, and stimulate the production of IFN-gamma by resting PBMC.

Cellular Location

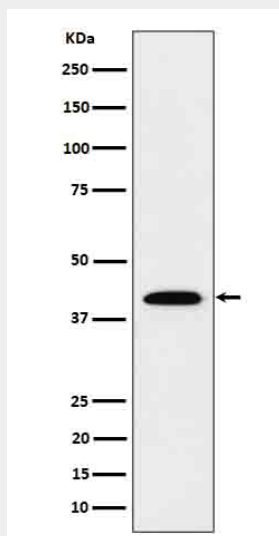
Secreted.

IL12B Antibody - Protocols

Provided below are standard protocols that you may find useful for product applications.

- [Western Blot](#)
- [Blocking Peptides](#)
- [Dot Blot](#)
- [Immunohistochemistry](#)
- [Immunofluorescence](#)
- [Immunoprecipitation](#)
- [Flow Cytometry](#)
- [Cell Culture](#)

IL12B Antibody - Images



Western blot analysis of IL12B in Recombinant Human IL12B protein cell lysate.