

**IL15 Antibody**  
**Rabbit mAb**  
**Catalog # AP93111**

## Specification

---

### IL15 Antibody - Product Information

Application	<b>WB</b>
Primary Accession	<a href="#">P40933</a>
Clonality	<b>Monoclonal</b>
<b>Other Names</b>	
IL15; Interleukin 15;	
Isotype	<b>Rabbit IgG</b>
Host	<b>Rabbit</b>
Calculated MW	<b>18086 Da</b>

### IL15 Antibody - Additional Information

Purification	<b>Affinity-chromatography</b>
Immunogen	<b>A synthesized peptide derived from human IL15</b>
Description	<b>Cytokine that stimulates the proliferation of T-lymphocytes. Stimulation by IL-15 requires interaction of IL-15 with components of IL-2R, including IL-2R beta and probably IL-2R gamma but not IL-2R alpha.</b>
Storage Condition and Buffer	<b>Rabbit IgG in phosphate buffered saline , pH 7.4, 150mM NaCl, 0.02% sodium azide and 50% glycerol. Store at +4°C short term. Store at -20°C long term. Avoid freeze / thaw cycle.</b>

### IL15 Antibody - Protein Information

**Name** IL15

#### **Function**

Cytokine that plays a major role in the development of inflammatory and protective immune responses to microbial invaders and parasites by modulating immune cells of both the innate and adaptive immune systems (PubMed:[15123770](http://www.uniprot.org/citations/15123770)). Stimulates the proliferation of natural killer cells, T-cells and B-cells and promotes the secretion of several cytokines (PubMed:[8178155](http://www.uniprot.org/citations/8178155), PubMed:[9326248](http://www.uniprot.org/citations/9326248)). In monocytes, induces the production of IL8 and monocyte chemoattractant protein 1/CCL2, two chemokines that attract neutrophils and monocytes respectively to sites of infection (PubMed:[9326248](http://www.uniprot.org/citations/9326248)). Unlike most cytokines, which are secreted in soluble form, IL15 is expressed in association with its high affinity

IL15RA on the surface of IL15-producing cells and delivers signals to target cells that express IL2RB and IL2RG receptor subunits (PubMed:<a href="http://www.uniprot.org/citations/10233906" target="\_blank">10233906</a>, PubMed:<a href="http://www.uniprot.org/citations/23104097" target="\_blank">23104097</a>, PubMed:<a href="http://www.uniprot.org/citations/8026467" target="\_blank">8026467</a>). Binding to its receptor triggers the phosphorylation of JAK1 and JAK3 and the recruitment and subsequent phosphorylation of signal transducer and activator of transcription-3/STAT3 and STAT5 (PubMed:<a href="http://www.uniprot.org/citations/7568001" target="\_blank">7568001</a>). In mast cells, induces the rapid tyrosine phosphorylation of STAT6 and thereby controls mast cell survival and release of cytokines such as IL4 (By similarity).

### Cellular Location

[Isoform IL15-S48AA]: Secreted.

### Tissue Location

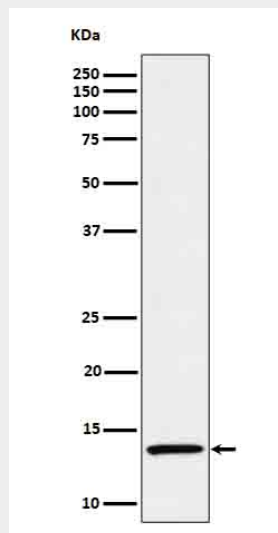
Most abundant in placenta and skeletal muscle. It is also detected in the heart, lung, liver and kidney. IL15-S21AA is preferentially expressed in tissues such as testis and thymus

## IL15 Antibody - Protocols

Provided below are standard protocols that you may find useful for product applications.

- [Western Blot](#)
- [Blocking Peptides](#)
- [Dot Blot](#)
- [Immunohistochemistry](#)
- [Immunofluorescence](#)
- [Immunoprecipitation](#)
- [Flow Cytometry](#)
- [Cell Culture](#)

## IL15 Antibody - Images



Western blot analysis of IL15 in Recombinant human IL-15 protein cell lysate.