

**CD275 Antibody**  
Rabbit mAb  
Catalog # AP93107

## Specification

---

### CD275 Antibody - Product Information

Application	WB
Primary Accession	<a href="#">O75144</a>
Clonality	Monoclonal
<b>Other Names</b>	
B7H2; B7RP1; CD275; GL50; ICOSL; Icoslg; LICOS;	
Isotype	Rabbit IgG
Host	Rabbit
Calculated MW	33349 Da

### CD275 Antibody - Additional Information

Purification	Affinity-chromatography
Immunogen	A synthesized peptide derived from human CD275
Description	Ligand for the T-cell-specific cell surface receptor ICOS. Acts as a costimulatory signal for T-cell proliferation and cytokine secretion; induces also B-cell proliferation and differentiation into plasma cells.
Storage Condition and Buffer	Rabbit IgG in phosphate buffered saline , pH 7.4, 150mM NaCl, 0.02% sodium azide and 50% glycerol. Store at +4°C short term. Store at -20°C long term. Avoid freeze / thaw cycle.

### CD275 Antibody - Protein Information

**Name** ICOSLG

#### Function

Ligand for the T-cell-specific cell surface receptor ICOS. Acts as a costimulatory signal for T-cell proliferation and cytokine secretion (PubMed: [11007762](http://www.uniprot.org/citations/11007762), PubMed: [11023515](http://www.uniprot.org/citations/11023515), PubMed: [30498080](http://www.uniprot.org/citations/30498080)). Also induces B-cell proliferation and differentiation into plasma cells. Could play an important role in mediating local tissue responses to inflammatory conditions, as well as in modulating the secondary immune response by co-stimulating memory T-cell function (By similarity). In endothelial cells, required for proper neutrophil transmigration in response to chemoattractants, such as CXCL8/IL8 or N-formyl-methionyl peptides (fMLP) (PubMed: [30498080](http://www.uniprot.org/citations/30498080)).

#### Cellular Location

Cell membrane; Single-pass type I membrane protein

#### Tissue Location

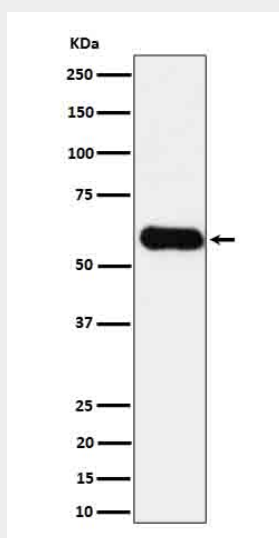
Expressed on peripheral blood B-cells and monocytes, as well as on monocyte-derived dendritic cells (at protein level). [Isoform 2]: Detected only in lymph nodes, leukocytes and spleen. Expressed on activated monocytes and dendritic cells.

#### CD275 Antibody - Protocols

Provided below are standard protocols that you may find useful for product applications.

- [Western Blot](#)
- [Blocking Peptides](#)
- [Dot Blot](#)
- [Immunohistochemistry](#)
- [Immunofluorescence](#)
- [Immunoprecipitation](#)
- [Flow Cytometry](#)
- [Cell Culture](#)

#### CD275 Antibody - Images



Western blot analysis of CD275 in HUVEC cell lysate.