

NDUFAB1 Antibody
Rabbit mAb
Catalog # AP93098

Specification

NDUFAB1 Antibody - Product Information

Application **WB, IHC, IP**
Primary Accession **[O14561](#)**
Clonality **Monoclonal**
Other Names
ACP; FASN2A; ndufab1; SDAP;

Isotype **Rabbit IgG**
Host **Rabbit**
Calculated MW **17417 Da**

NDUFAB1 Antibody - Additional Information

Purification **Affinity-chromatography**
Immunogen **A synthesized peptide derived from human NDUFAB1**
Description **Carrier of the growing fatty acid chain in fatty acid biosynthesis in mitochondria. Accessory and non-catalytic subunit of the mitochondrial membrane respiratory chain NADH dehydrogenase (Complex I), which functions in the transfer of electrons from NADH to the respiratory chain.**
Storage Condition and Buffer **Rabbit IgG in phosphate buffered saline , pH 7.4, 150mM NaCl, 0.02% sodium azide and 50% glycerol. Store at +4°C short term. Store at -20°C long term. Avoid freeze / thaw cycle.**

NDUFAB1 Antibody - Protein Information

Name NDUFAB1 ([HGNC:7694](#))

Function

Carrier of the growing fatty acid chain in fatty acid biosynthesis (By similarity) (PubMed:[27626371](http://www.uniprot.org/citations/27626371)). Accessory and non- catalytic subunit of the mitochondrial membrane respiratory chain NADH dehydrogenase (Complex I), which functions in the transfer of electrons from NADH to the respiratory chain (PubMed:[27626371](http://www.uniprot.org/citations/27626371)). Accessory protein, of the core iron-sulfur cluster (ISC) assembly complex, that regulates, in association with LYRM4, the stability and the cysteine desulfurase activity of NFS1 and participates in the [2Fe-2S] clusters assembly on the scaffolding protein ISCU (PubMed:[31664822](http://www.uniprot.org/citations/31664822)). The core iron-sulfur cluster (ISC) assembly complex is involved in the de novo synthesis of a [2Fe-2S]

cluster, the first step of the mitochondrial iron-sulfur protein biogenesis. This process is initiated by the cysteine desulfurase complex (NFS1:LYRM4:NDUFAB1) that produces persulfide which is delivered on the scaffold protein ISCU in a FXN- dependent manner. Then this complex is stabilized by FDX2 which provides reducing equivalents to accomplish the [2Fe-2S] cluster assembly. Finally, the [2Fe-2S] cluster is transferred from ISCU to chaperone proteins, including HSCB, HSPA9 and GLRX5 (By similarity).

Cellular Location

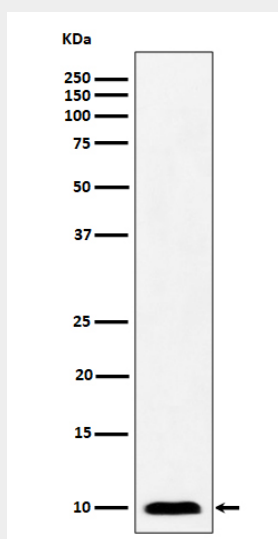
Mitochondrion

NDUFAB1 Antibody - Protocols

Provided below are standard protocols that you may find useful for product applications.

- [Western Blot](#)
- [Blocking Peptides](#)
- [Dot Blot](#)
- [Immunohistochemistry](#)
- [Immunofluorescence](#)
- [Immunoprecipitation](#)
- [Flow Cytometry](#)
- [Cell Culture](#)

NDUFAB1 Antibody - Images



Western blot analysis of NDUFAB1 expression in A431 cell lysate.