

**Nucleolin Antibody**  
**Rabbit mAb**  
**Catalog # AP93090****Specification**

---

**Nucleolin Antibody - Product Information**

Application	<b>WB, IHC, ICC</b>
Primary Accession	<a href="#">P19338</a>
Reactivity	<b>Rat</b>
Clonality	<b>Monoclonal</b>
<b>Other Names</b>	
NCL; Nucl; Nucleolin; Protein C23;	
Isotype	<b>Rabbit IgG</b>
Host	<b>Rabbit</b>
Calculated MW	<b>76614 Da</b>

**Nucleolin Antibody - Additional Information**

Purification	<b>Affinity-chromatography</b>
Immunogen	<b>A synthesized peptide derived from human Nucleolin</b>
Description	<b>Nucleolin is the major nucleolar protein of growing eukaryotic cells. It is found associated with intranucleolar chromatin and pre-ribosomal particles. It induces chromatin decondensation by binding to histone H1.</b>
Storage Condition and Buffer	<b>Rabbit IgG in phosphate buffered saline , pH 7.4, 150mM NaCl, 0.02% sodium azide and 50% glycerol. Store at +4°C short term. Store at -20°C long term. Avoid freeze / thaw cycle.</b>

**Nucleolin Antibody - Protein Information****Name** NCL**Function**

Nucleolin is the major nucleolar protein of growing eukaryotic cells. It is found associated with intranucleolar chromatin and pre-ribosomal particles. It induces chromatin decondensation by binding to histone H1. It is thought to play a role in pre-rRNA transcription and ribosome assembly. May play a role in the process of transcriptional elongation. Binds RNA oligonucleotides with 5'-UUAGGG- 3' repeats more tightly than the telomeric single-stranded DNA 5'- TTAGGG-3' repeats.

**Cellular Location**

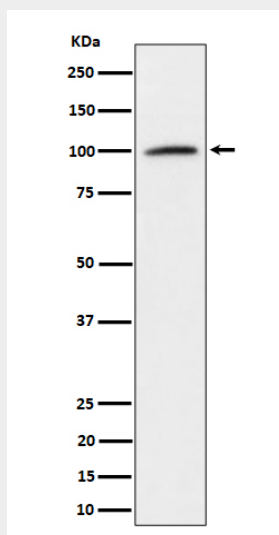
Nucleus, nucleolus. Cytoplasm. Note=Localized in cytoplasmic mRNP granules containing untranslated mRNAs

## Nucleolin Antibody - Protocols

Provided below are standard protocols that you may find useful for product applications.

- [Western Blot](#)
- [Blocking Peptides](#)
- [Dot Blot](#)
- [Immunohistochemistry](#)
- [Immunofluorescence](#)
- [Immunoprecipitation](#)
- [Flow Cytometry](#)
- [Cell Culture](#)

## Nucleolin Antibody - Images



Western blot analysis of Nucleolin expression in K562 cell lysate.