

MCM6 Antibody
Rabbit mAb
Catalog # AP93087

Specification

MCM6 Antibody - Product Information

Application	WB, IHC, FC, ICC, IP
Primary Accession	Q14566
Reactivity	Rat
Clonality	Monoclonal
Other Names	
Mcm6; Mis5;	
Isotype	Rabbit IgG
Host	Rabbit
Calculated MW	92889 Da

MCM6 Antibody - Additional Information

Purification	Affinity-chromatography
Immunogen	A synthesized peptide derived from human MCM6
Description	Acts as component of the MCM2-7 complex (MCM complex) which is the putative replicative helicase essential for 'once per cell cycle' DNA replication initiation and elongation in eukaryotic cells.
Storage Condition and Buffer	Rabbit IgG in phosphate buffered saline , pH 7.4, 150mM NaCl, 0.02% sodium azide and 50% glycerol. Store at +4°C short term. Store at -20°C long term. Avoid freeze / thaw cycle.

MCM6 Antibody - Protein Information

Name MCM6 ([HGNC:6949](#))

Function

Acts as a component of the MCM2-7 complex (MCM complex) which is the replicative helicase essential for 'once per cell cycle' DNA replication initiation and elongation in eukaryotic cells. Core component of CDC45-MCM-GINS (CMG) helicase, the molecular machine that unwinds template DNA during replication, and around which the replisome is built (PubMed:16899510, PubMed:32453425, PubMed:34694004, PubMed:34700328, PubMed:35585232, PubMed:9305914). The active ATPase sites in the MCM2-7 ring are formed through the interaction surfaces of two neighboring

subunits such that a critical structure of a conserved arginine finger motif is provided in trans relative to the ATP-binding site of the Walker A box of the adjacent subunit. The six ATPase active sites, however, are likely to contribute differentially to the complex helicase activity (PubMed:32453425).

Cellular Location

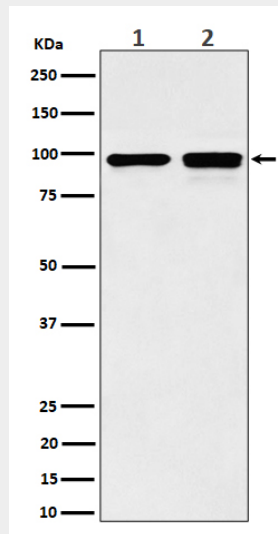
Nucleus. Chromosome. Note=Binds to chromatin during G1 and detaches from it during S phase.

MCM6 Antibody - Protocols

Provided below are standard protocols that you may find useful for product applications.

- [Western Blot](#)
- [Blocking Peptides](#)
- [Dot Blot](#)
- [Immunohistochemistry](#)
- [Immunofluorescence](#)
- [Immunoprecipitation](#)
- [Flow Cytometry](#)
- [Cell Culture](#)

MCM6 Antibody - Images



Western blot analysis of MCM6 expression in (1) MCF7 cell lysate; (2) NIH/3T3 cell lysate.