

CRABP2 Antibody
Rabbit mAb
Catalog # AP93085

Specification

CRABP2 Antibody - Product Information

| | |
|--|------------------------|
| Application | WB, IHC, FC, ICC |
| Primary Accession | P29373 |
| Reactivity | Rat |
| Clonality | Monoclonal |
| Other Names | |
| Cellular retinoic acid binding protein 2; Cellular retinoic acid binding protein II ; Crabp2; CRABPII; RBP6; | |
| Isotype | Rabbit IgG |
| Host | Rabbit |
| Calculated MW | 15693 Da |

CRABP2 Antibody - Additional Information

| | |
|------------------------------|---|
| Purification | Affinity-chromatography |
| Immunogen | A synthesized peptide derived from human CRABP2 |
| Description | Transports retinoic acid to the nucleus. Regulates the access of retinoic acid to the nuclear retinoic acid receptors. |
| Storage Condition and Buffer | Rabbit IgG in phosphate buffered saline , pH 7.4, 150mM NaCl, 0.02% sodium azide and 50% glycerol. Store at +4°C short term. Store at -20°C long term. Avoid freeze / thaw cycle. |

CRABP2 Antibody - Protein Information

Name CRABP2

Function

Transports retinoic acid to the nucleus. Regulates the access of retinoic acid to the nuclear retinoic acid receptors.

Cellular Location

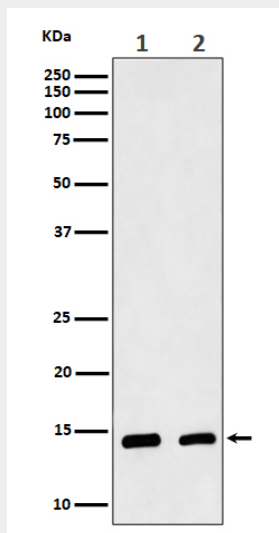
Cytoplasm. Endoplasmic reticulum. Nucleus. Note=Upon ligand binding, a conformation change exposes a nuclear localization motif and the protein is transported into the nucleus

CRABP2 Antibody - Protocols

Provided below are standard protocols that you may find useful for product applications.

- [Western Blot](#)
- [Blocking Peptides](#)
- [Dot Blot](#)
- [Immunohistochemistry](#)
- [Immunofluorescence](#)
- [Immunoprecipitation](#)
- [Flow Cytometry](#)
- [Cell Culture](#)

CRABP2 Antibody - Images



Western blot analysis of CRABP2 expression in (1) MCF7 cell lysate; (2) Mouse skin lysate.