

**Serine racemase Antibody**  
**Rabbit mAb**  
**Catalog # AP93077****Specification**

---

**Serine racemase Antibody - Product Information**

Application	<b>WB</b>
Primary Accession	<a href="#">O9GZT4</a>
Clonality	<b>Monoclonal</b>
<b>Other Names</b>	
D serine ammonia lyase; ILV1; ISO1; L serine ammonia lyase;	
Isotype	<b>Rabbit IgG</b>
Host	<b>Rabbit</b>
Calculated MW	<b>36566 Da</b>

**Serine racemase Antibody - Additional Information**

Purification	<b>Affinity-chromatography</b>
Immunogen	<b>A synthesized peptide derived from human Serine racemase</b>
Description	<b>Catalyzes the synthesis of D-serine from L-serine. D-serine is a key coagonist with glutamate at NMDA receptors. Has dehydratase activity towards both L-serine and D-serine.</b>
Storage Condition and Buffer	<b>Rabbit IgG in phosphate buffered saline , pH 7.4, 150mM NaCl, 0.02% sodium azide and 50% glycerol. Store at +4°C short term. Store at -20°C long term. Avoid freeze / thaw cycle.</b>

**Serine racemase Antibody - Protein Information****Name SRR****Function**

Catalyzes the synthesis of D-serine from L-serine (PubMed:<a href="http://www.uniprot.org/citations/20106978" target="\_blank">20106978</a>, PubMed:<a href="http://www.uniprot.org/citations/23391306" target="\_blank">23391306</a>, PubMed:<a href="http://www.uniprot.org/citations/29277459" target="\_blank">29277459</a>). D-serine is a key coagonist with glutamate at NMDA receptors. Has dehydratase activity towards both L-serine and D-serine (By similarity).

**Tissue Location**

Expressed in the cerebellum, hippocampus, dorsolateral prefrontal cortex, and in motor neurons and glial cells of the lumbar spinal cord (at protein level) (PubMed:17880399, PubMed:24138986). Increased in the dorsolateral prefrontal cortex of schizophrenic patients (at protein level) (PubMed:17880399). Brain: expressed at high levels in hippocampus and corpus callosum,

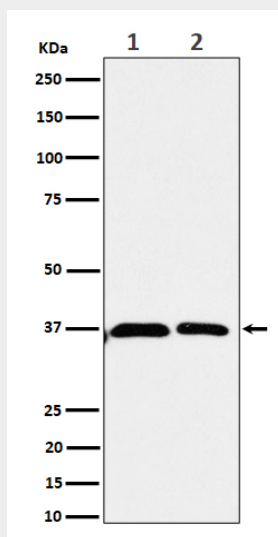
intermediate levels in substantia nigra and caudate, and low levels in amygdala, thalamus, and subthalamic nuclei (PubMed:15193426). Expressed in heart, skeletal muscle, kidney, and liver (PubMed:15193426)

### Serine racemase Antibody - Protocols

Provided below are standard protocols that you may find useful for product applications.

- [Western Blot](#)
- [Blocking Peptides](#)
- [Dot Blot](#)
- [Immunohistochemistry](#)
- [Immunofluorescence](#)
- [Immunoprecipitation](#)
- [Flow Cytometry](#)
- [Cell Culture](#)

### Serine racemase Antibody - Images



Western blot analysis of Serine racemase expression in (1) 293 cell lysate; (2) U-87 MG cell lysate.