

NSDHL Antibody
Rabbit mAb
Catalog # AP93070

Specification

NSDHL Antibody - Product Information

Application	WB, IP
Primary Accession	Q15738
Reactivity	Rat
Clonality	Monoclonal
Other Names	
NSDHL; SDR31E1; XAP104;	
Isotype	Rabbit IgG
Host	Rabbit
Calculated MW	41900 Da

NSDHL Antibody - Additional Information

Purification	Affinity-chromatography
Immunogen	A synthesized peptide derived from human NSDHL
Description	Catalyzes the NAD(P) ⁺ -dependent oxidative decarboxylation of the C4 methyl groups of 4-alpha-carboxysterols in post-squalene cholesterol biosynthesis (By similarity).
Storage Condition and Buffer	Rabbit IgG in phosphate buffered saline , pH 7.4, 150mM NaCl, 0.02% sodium azide and 50% glycerol. Store at +4°C short term. Store at -20°C long term. Avoid freeze / thaw cycle.

NSDHL Antibody - Protein Information

Name NSDHL

Synonyms H105E3

Function

Catalyzes the NAD(P)(+)-dependent oxidative decarboxylation of the C4 methyl groups of 4-alpha-carboxysterols in post-squalene cholesterol biosynthesis (By similarity). Also plays a role in the regulation of the endocytic trafficking of EGFR (By similarity).

Cellular Location

Endoplasmic reticulum membrane; Single-pass membrane protein. Lipid droplet {ECO:0000250|UniProtKB:Q9R1J0} Note=Trafficking through the Golgi is necessary for ER membrane localization. {ECO:0000250|UniProtKB:Q9R1J0}

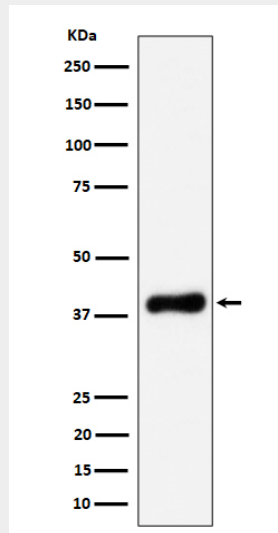
Tissue Location

Brain, heart, liver, lung, kidney, skin and placenta

NSDHL Antibody - Protocols

Provided below are standard protocols that you may find useful for product applications.

- [Western Blot](#)
- [Blocking Peptides](#)
- [Dot Blot](#)
- [Immunohistochemistry](#)
- [Immunofluorescence](#)
- [Immunoprecipitation](#)
- [Flow Cytometry](#)
- [Cell Culture](#)

NSDHL Antibody - Images

Western blot analysis of NSDHL expression in HeLa cell lysate.