

NDUFC2 Antibody
Rabbit mAb
Catalog # AP93050

Specification

NDUFC2 Antibody - Product Information

Application	WB, IHC
Primary Accession	O95298
Clonality	Monoclonal
Other Names	
HLC1; NADH2; NDUFC2;	
Isotype	Rabbit IgG
Host	Rabbit
Calculated MW	14188 Da

NDUFC2 Antibody - Additional Information

Purification	Affinity-chromatography
Immunogen	A synthesized peptide derived from human NDUFC2
Description	Accessory subunit of the mitochondrial membrane respiratory chain NADH dehydrogenase (Complex I), that is believed not to be involved in catalysis. Complex I functions in the transfer of electrons from NADH to the respiratory chain. The immediate electron acceptor for the enzyme is believed to be ubiquinone.
Storage Condition and Buffer	Rabbit IgG in phosphate buffered saline , pH 7.4, 150mM NaCl, 0.02% sodium azide and 50% glycerol. Store at +4°C short term. Store at -20°C long term. Avoid freeze / thaw cycle.

NDUFC2 Antibody - Protein Information

Name NDUFC2 ([HGNC:7706](#))

Function

Accessory subunit of the mitochondrial membrane respiratory chain NADH dehydrogenase (Complex I), that is believed not to be involved in catalysis but required for the complex assembly. Complex I functions in the transfer of electrons from NADH to the respiratory chain. The immediate electron acceptor for the enzyme is believed to be ubiquinone.

Cellular Location

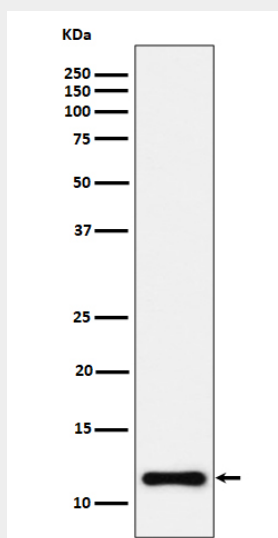
Mitochondrion inner membrane; Single-pass membrane protein; Matrix side

NDUFC2 Antibody - Protocols

Provided below are standard protocols that you may find useful for product applications.

- [Western Blot](#)
- [Blocking Peptides](#)
- [Dot Blot](#)
- [Immunohistochemistry](#)
- [Immunofluorescence](#)
- [Immunoprecipitation](#)
- [Flow Cytometry](#)
- [Cell Culture](#)

NDUFC2 Antibody - Images



Western blot analysis of NDUFC2 expression in HeLa cell lysate.