

NDUFB4 Antibody
Rabbit mAb
Catalog # AP93049

Specification

NDUFB4 Antibody - Product Information

Application	WB, IHC, ICC
Primary Accession	O95168
Reactivity	Rat
Clonality	Monoclonal
Other Names	
NDUFB4;	
Isotype	Rabbit IgG
Host	Rabbit
Calculated MW	15209 Da

NDUFB4 Antibody - Additional Information

Purification	Affinity-chromatography
Immunogen	A synthesized peptide derived from human NDUFB4
Description	Accessory subunit of the mitochondrial membrane respiratory chain NADH dehydrogenase (Complex I), that is believed not to be involved in catalysis. Complex I functions in the transfer of electrons from NADH to the respiratory chain. The immediate electron acceptor for the enzyme is believed to be ubiquinone.
Storage Condition and Buffer	Rabbit IgG in phosphate buffered saline , pH 7.4, 150mM NaCl, 0.02% sodium azide and 50% glycerol. Store at +4°C short term. Store at -20°C long term. Avoid freeze / thaw cycle.

NDUFB4 Antibody - Protein Information

Name NDUFB4

Function

Accessory subunit of the mitochondrial membrane respiratory chain NADH dehydrogenase (Complex I), that is believed not to be involved in catalysis. Complex I functions in the transfer of electrons from NADH to the respiratory chain. The immediate electron acceptor for the enzyme is believed to be ubiquinone.

Cellular Location

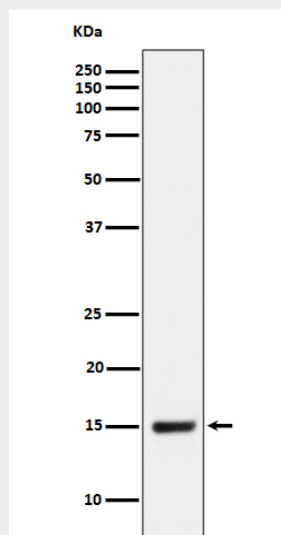
Mitochondrion inner membrane; Single-pass membrane protein; Matrix side

NDUFB4 Antibody - Protocols

Provided below are standard protocols that you may find useful for product applications.

- [Western Blot](#)
- [Blocking Peptides](#)
- [Dot Blot](#)
- [Immunohistochemistry](#)
- [Immunofluorescence](#)
- [Immunoprecipitation](#)
- [Flow Cytometry](#)
- [Cell Culture](#)

NDUFB4 Antibody - Images



Western blot analysis of NDUFB4 expression in HepG2 cell lysate.