

**PSMB10 Antibody**  
Rabbit mAb  
Catalog # AP93045

## Specification

---

### PSMB10 Antibody - Product Information

Application	WB, ICC
Primary Accession	<a href="#">P40306</a>
Clonality	Monoclonal
<b>Other Names</b>	
LMP10; MECL1; Psmb10;	
Isotype	Rabbit IgG
Host	Rabbit
Calculated MW	28936 Da

### PSMB10 Antibody - Additional Information

Purification	Affinity-chromatography
Immunogen	A synthesized peptide derived from human PSMB10
Description	The proteasome is a multicatalytic proteinase complex which is characterized by its ability to cleave peptides with Arg, Phe, Tyr, Leu, and Glu adjacent to the leaving group at neutral or slightly basic pH. The proteasome has an ATP-dependent proteolytic activity. This subunit is involved in antigen processing to generate class I binding peptides.
Storage Condition and Buffer	Rabbit IgG in phosphate buffered saline , pH 7.4, 150mM NaCl, 0.02% sodium azide and 50% glycerol. Store at +4°C short term. Store at -20°C long term. Avoid freeze / thaw cycle.

### PSMB10 Antibody - Protein Information

**Name** PSMB10

**Synonyms** LMP10, MECL1

#### Function

The proteasome is a multicatalytic proteinase complex which is characterized by its ability to cleave peptides with Arg, Phe, Tyr, Leu, and Glu adjacent to the leaving group at neutral or slightly basic pH. The proteasome has an ATP-dependent proteolytic activity. This subunit is involved in antigen processing to generate class I binding peptides.

#### Cellular Location

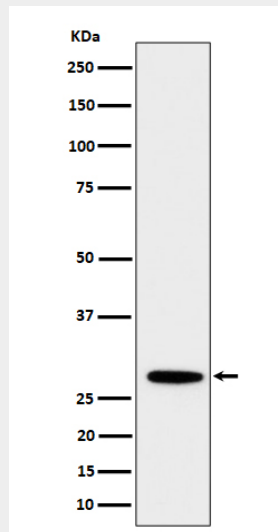
Cytoplasm {ECO:0000255|PROSITE-ProRule:PRU00809}. Nucleus

### PSMB10 Antibody - Protocols

Provided below are standard protocols that you may find useful for product applications.

- [Western Blot](#)
- [Blocking Peptides](#)
- [Dot Blot](#)
- [Immunohistochemistry](#)
- [Immunofluorescence](#)
- [Immunoprecipitation](#)
- [Flow Cytometry](#)
- [Cell Culture](#)

### PSMB10 Antibody - Images



Western blot analysis of PSMB10 expression in Daudi cell lysate.