

Nesprin3 Antibody
Rabbit mAb
Catalog # AP93041

Specification

Nesprin3 Antibody - Product Information

Application	WB
Primary Accession	O6ZMZ3
Clonality	Monoclonal
Other Names	
C14orf49; Nesp3; Nesprin 3; NET53; SYNE3;	
Isotype	Rabbit IgG
Host	Rabbit
Calculated MW	112216 Da

Nesprin3 Antibody - Additional Information

Purification	Affinity-chromatography
Immunogen	A synthesized peptide derived from human Nesprin3
Description	Component of SUN-protein-containing multivariate complexes also called LINC complexes which link the nucleoskeleton and cytoskeleton by providing versatile outer nuclear membrane attachment sites for cytoskeletal filaments.
Storage Condition and Buffer	Rabbit IgG in phosphate buffered saline , pH 7.4, 150mM NaCl, 0.02% sodium azide and 50% glycerol. Store at +4°C short term. Store at -20°C long term. Avoid freeze / thaw cycle.

Nesprin3 Antibody - Protein Information

Name SYNE3 ([HGNC:19861](#))

Function

As a component of the LINC (Linker of Nucleoskeleton and Cytoskeleton) complex involved in the connection between the nuclear lamina and the cytoskeleton. The nucleocytoplasmic interactions established by the LINC complex play an important role in the transmission of mechanical forces across the nuclear envelope and in nuclear movement and positioning. Probable anchoring protein which tethers the nucleus to the cytoskeleton by binding PLEC which can associate with the intermediate filament system. Plays a role in the regulation of aortic epithelial cell morphology, and is required for flow-induced centrosome polarization and directional migration in aortic endothelial cells.

Cellular Location

Nucleus outer membrane; Single-pass type IV membrane protein. Nucleus envelope. Rough

endoplasmic reticulum

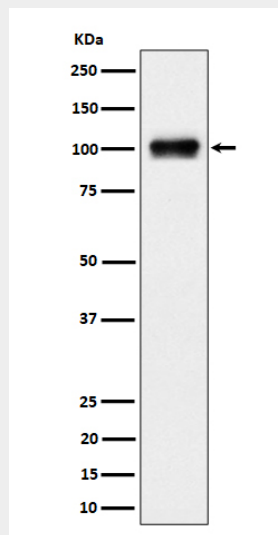
Tissue Location

Expressed in aortic endothelial cells (at protein level).

Nesprin3 Antibody - Protocols

Provided below are standard protocols that you may find useful for product applications.

- [Western Blot](#)
- [Blocking Peptides](#)
- [Dot Blot](#)
- [Immunohistochemistry](#)
- [Immunofluorescence](#)
- [Immunoprecipitation](#)
- [Flow Cytometry](#)
- [Cell Culture](#)

Nesprin3 Antibody - Images

Western blot analysis of Nesprin3 expression in 293 cell lysate.