

FAM50A Antibody
Rabbit mAb
Catalog # AP93040

Specification

FAM50A Antibody - Product Information

Application	WB, IHC, ICC
Primary Accession	Q14320
Reactivity	Rat
Clonality	Monoclonal
Other Names	
fam50a; HXC26; XAP5;	
Isotype	Rabbit IgG
Host	Rabbit
Calculated MW	40242 Da

FAM50A Antibody - Additional Information

Purification	Affinity-chromatography
Immunogen	A synthesized peptide derived from human FAM50A
Description	May be a DNA-binding protein or transcriptional factor.
Storage Condition and Buffer	Rabbit IgG in phosphate buffered saline , pH 7.4, 150mM NaCl, 0.02% sodium azide and 50% glycerol. Store at +4°C short term. Store at -20°C long term. Avoid freeze / thaw cycle.

FAM50A Antibody - Protein Information

Name FAM50A

Synonyms DXS9928E, HXC26, XAP5

Function

Probably involved in the regulation of pre-mRNA splicing.

Cellular Location

Nucleus.

Tissue Location

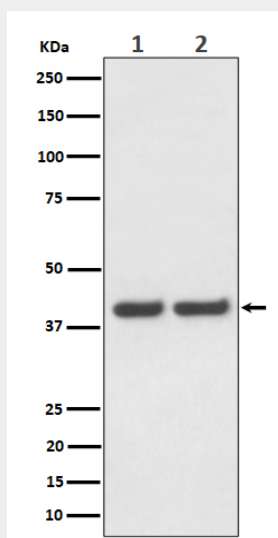
Widely expressed in fetal and adult tissues. Mostly abundant in fetal brain, liver and kidney; in the adult, high levels were also observed in heart, skeletal muscle, spleen, thymus, prostate and small intestine. Expressed in fetal cerebellum and hypothalamus Low expression is observed in fetal temporal lobe (PubMed:32703943)

FAM50A Antibody - Protocols

Provided below are standard protocols that you may find useful for product applications.

- [Western Blot](#)
- [Blocking Peptides](#)
- [Dot Blot](#)
- [Immunohistochemistry](#)
- [Immunofluorescence](#)
- [Immunoprecipitation](#)
- [Flow Cytometry](#)
- [Cell Culture](#)

FAM50A Antibody - Images



Western blot analysis of FAM50A expression in (1) HeLa cell lysate; (2) Raw264.7 cell lysate.