

PGM1 Antibody
Rabbit mAb
Catalog # AP93025

Specification

PGM1 Antibody - Product Information

Application	WB, ICC, IP
Primary Accession	P36871
Reactivity	Rat
Clonality	Monoclonal
Other Names	
CDG1T; Glucose phosphomutase 1; GSD14; PGM1; Phosphoglucomutase 1;	
Isotype	Rabbit IgG
Host	Rabbit
Calculated MW	61449 Da

PGM1 Antibody - Additional Information

Purification	Affinity-chromatography
Immunogen	A synthesized peptide derived from human PGM1
Description	This enzyme participates in both the breakdown and synthesis of glucose.
Storage Condition and Buffer	Rabbit IgG in phosphate buffered saline , pH 7.4, 150mM NaCl, 0.02% sodium azide and 50% glycerol. Store at +4°C short term. Store at -20°C long term. Avoid freeze / thaw cycle.

PGM1 Antibody - Protein Information

Name PGM1

Function

Catalyzes the reversible isomerization of alpha-D-glucose 1- phosphate to alpha-D-glucose 6-phosphate (PubMed: [15378030](http://www.uniprot.org/citations/15378030), PubMed: [25288802](http://www.uniprot.org/citations/25288802)). The mechanism proceeds via the intermediate compound alpha-D-glucose 1,6-bisphosphate (Probable) (PubMed: [25288802](http://www.uniprot.org/citations/25288802)). This enzyme participates in both the breakdown and synthesis of glucose (PubMed: [17924679](http://www.uniprot.org/citations/17924679), PubMed: [25288802](http://www.uniprot.org/citations/25288802)).

Cellular Location

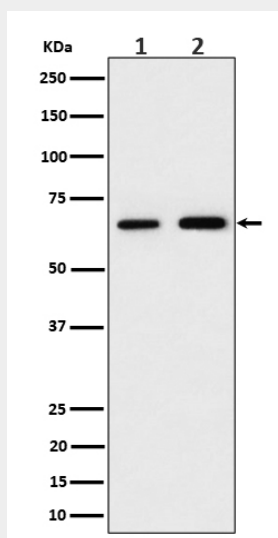
[Isoform 1]: Cytoplasm.

PGM1 Antibody - Protocols

Provided below are standard protocols that you may find useful for product applications.

- [Western Blot](#)
- [Blocking Peptides](#)
- [Dot Blot](#)
- [Immunohistochemistry](#)
- [Immunofluorescence](#)
- [Immunoprecipitation](#)
- [Flow Cytometry](#)
- [Cell Culture](#)

PGM1 Antibody - Images



Western blot analysis of PGM1 expression in (1) 293 cell lysate; (2) RAW 264.7 cell lysate.