

MLD Antibody
Rabbit mAb
Catalog # AP93007

Specification

MLD Antibody - Product Information

Application	WB
Primary Accession	O15121
Clonality	Monoclonal
Other Names	
DEGS 1; DEGS; DES1; FADS7; MIG15; MLD;	
Isotype	Rabbit IgG
Host	Rabbit
Calculated MW	37866 Da

MLD Antibody - Additional Information

Purification	Affinity-chromatography
Immunogen	A synthesized peptide derived from human MLD
Description	DEGS1 is a member of the membrane fatty acid desaturase family which is responsible for inserting double bonds into specific positions in fatty acids. It contains three His containing consensus motifs that are characteristic of a group of membrane fatty acid desaturases.
Storage Condition and Buffer	Rabbit IgG in phosphate buffered saline , pH 7.4, 150mM NaCl, 0.02% sodium azide and 50% glycerol. Store at +4°C short term. Store at -20°C long term. Avoid freeze / thaw cycle.

MLD Antibody - Protein Information

Name DEGS1 ([HGNC:13709](#))

Synonyms DES1, MLD

Function

Has sphingolipid-delta-4-desaturase activity. Converts D- erythro-sphinganine to D-erythro-sphingosine (E-sphing-4-ene) (PubMed:11937514, PubMed:30620337, PubMed:30620338). Catalyzes the equilibrium isomerization of retinols (By similarity).

Cellular Location

Mitochondrion membrane. Endoplasmic reticulum membrane; Multi-pass membrane protein

Tissue Location

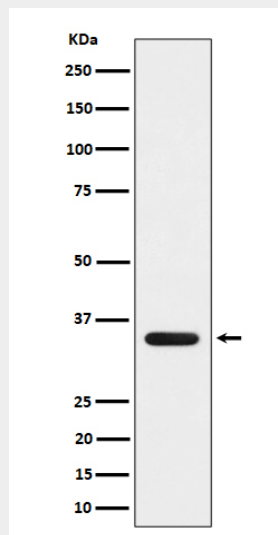
Ubiquitous..

MLD Antibody - Protocols

Provided below are standard protocols that you may find useful for product applications.

- [Western Blot](#)
- [Blocking Peptides](#)
- [Dot Blot](#)
- [Immunohistochemistry](#)
- [Immunofluorescence](#)
- [Immunoprecipitation](#)
- [Flow Cytometry](#)
- [Cell Culture](#)

MLD Antibody - Images



Western blot analysis of MLD expression in 293 cell lysate.