

NSDHL Antibody
Rabbit mAb
Catalog # AP93005

Specification

NSDHL Antibody - Product Information

Application **WB, IHC, ICC**
Primary Accession [Q15738](#)
Clonality **Monoclonal**
Other Names
H105E3; NSDHL; SDR31E1; XAP104;

Isotype **Rabbit IgG**
Host **Rabbit**
Calculated MW **41900 Da**

NSDHL Antibody - Additional Information

Purification **Affinity-chromatography**
Immunogen **A synthesized peptide derived from human NSDHL**
Description **Catalyzes the NAD(P)⁺-dependent oxidative decarboxylation of the C4 methyl groups of 4-alpha-carboxysterols in post-squalene cholesterol biosynthesis (By similarity).**
Storage Condition and Buffer **Rabbit IgG in phosphate buffered saline , pH 7.4, 150mM NaCl, 0.02% sodium azide and 50% glycerol. Store at +4°C short term. Store at -20°C long term. Avoid freeze / thaw cycle.**

NSDHL Antibody - Protein Information

Name NSDHL

Synonyms H105E3

Function

Catalyzes the NAD(P)(+)-dependent oxidative decarboxylation of the C4 methyl groups of 4-alpha-carboxysterols in post-squalene cholesterol biosynthesis (By similarity). Also plays a role in the regulation of the endocytic trafficking of EGFR (By similarity).

Cellular Location

Endoplasmic reticulum membrane; Single-pass membrane protein. Lipid droplet {ECO:0000250|UniProtKB:Q9R1J0} Note=Trafficking through the Golgi is necessary for ER membrane localization. {ECO:0000250|UniProtKB:Q9R1J0}

Tissue Location

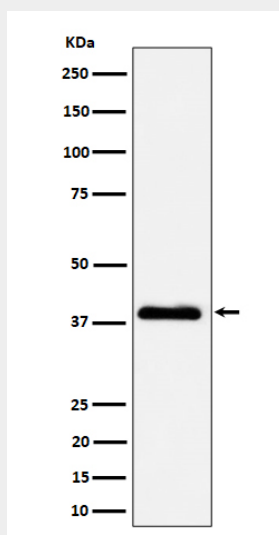
Brain, heart, liver, lung, kidney, skin and placenta

NSDHL Antibody - Protocols

Provided below are standard protocols that you may find useful for product applications.

- [Western Blot](#)
- [Blocking Peptides](#)
- [Dot Blot](#)
- [Immunohistochemistry](#)
- [Immunofluorescence](#)
- [Immunoprecipitation](#)
- [Flow Cytometry](#)
- [Cell Culture](#)

NSDHL Antibody - Images



Western blot analysis of NSDHL expression in A431 cell lysate.