

CECR5 Antibody
Rabbit mAb
Catalog # AP92995

Specification

CECR5 Antibody - Product Information

Application	WB, ICC
Primary Accession	Q9BXW7
Clonality	Monoclonal
Other Names	
Cecr5;	
Isotype	Rabbit IgG
Host	Rabbit
Calculated MW	46321 Da

CECR5 Antibody - Additional Information

Purification	Affinity-chromatography
Immunogen	A synthesized peptide derived from human CECR5
Description	Candidate gene for the Cat Eye Syndrome (CES), a developmental disorder associated with the duplication of a 2 Mb region of 22q11.2. Duplication usually takes in the form of a supernumerary bisatellited isodicentric chromosome, resulting in four copies of the region (represents an inv dup(22)(q11)). CES is characterized clinically by the combination of coloboma of the iris and anal atresia with fistula, downslanting palpebral fissures, preauricular tags and/or pits, frequent occurrence of heart and renal malformations, and normal or near-normal mental development.
Storage Condition and Buffer	Rabbit IgG in phosphate buffered saline , pH 7.4, 150mM NaCl, 0.02% sodium azide and 50% glycerol. Store at +4°C short term. Store at -20°C long term. Avoid freeze / thaw cycle.

CECR5 Antibody - Protein Information

Name HDHD5 ([HGNC:1843](#))

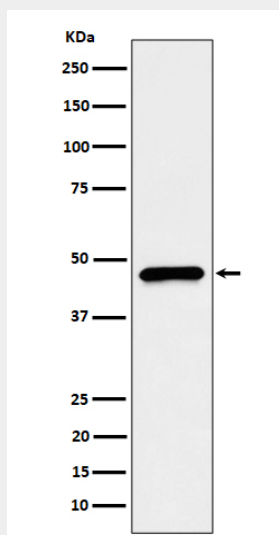
Tissue Location
Widely expressed.

CECR5 Antibody - Protocols

Provided below are standard protocols that you may find useful for product applications.

- [Western Blot](#)
- [Blocking Peptides](#)
- [Dot Blot](#)
- [Immunohistochemistry](#)
- [Immunofluorescence](#)
- [Immunoprecipitation](#)
- [Flow Cytometry](#)
- [Cell Culture](#)

CECR5 Antibody - Images



Western blot analysis of CECR5 expression in HepG2 cell lysate.