

MDH2 Antibody
Rabbit mAb
Catalog # AP92987

Specification

MDH2 Antibody - Product Information

Application	WB, IHC
Primary Accession	P40926
Reactivity	Rat
Clonality	Monoclonal
Other Names	
M MDH; Malate dehydrogenase;	
Isotype	Rabbit IgG
Host	Rabbit
Calculated MW	35503 Da

MDH2 Antibody - Additional Information

Purification	Affinity-chromatography
Immunogen	A synthesized peptide derived from human MDH2
Description	Belongs to the LDH/MDH superfamily. MDH type 1 family.
Storage Condition and Buffer	Rabbit IgG in phosphate buffered saline , pH 7.4, 150mM NaCl, 0.02% sodium azide and 50% glycerol. Store at +4°C short term. Store at -20°C long term. Avoid freeze / thaw cycle.

MDH2 Antibody - Protein Information

Name MDH2

Cellular Location

Mitochondrion matrix {ECO:0000250|UniProtKB:P04636}

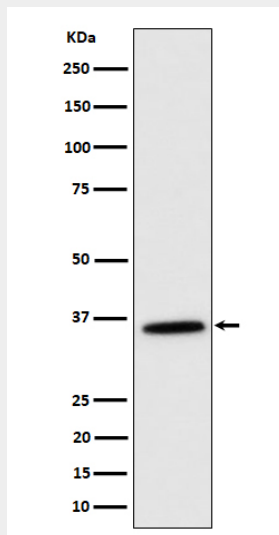
MDH2 Antibody - Protocols

Provided below are standard protocols that you may find useful for product applications.

- [Western Blot](#)
- [Blocking Peptides](#)
- [Dot Blot](#)
- [Immunohistochemistry](#)
- [Immunofluorescence](#)
- [Immunoprecipitation](#)

- [Flow Cytometry](#)
- [Cell Culture](#)

MDH2 Antibody - Images



Western blot analysis of MDH2 expression in K562 cell lysate.