

Mras Antibody
Rabbit mAb
Catalog # AP92976

Specification

Mras Antibody - Product Information

Application	WB
Primary Accession	O14807
Reactivity	Rat
Clonality	Monoclonal
Other Names	
Mras; R ras3; Ras related protein MRas; Ras related protein RRas3; RRas3; Xras;	
Isotype	Rabbit IgG
Host	Rabbit
Calculated MW	23846 Da

Mras Antibody - Additional Information

Purification	Affinity-chromatography
Immunogen	A synthesized peptide derived from human Mras
Description	May serve as an important signal transducer for a novel upstream stimuli in controlling cell proliferation. Weakly activates the MAP kinase pathway.
Storage Condition and Buffer	Rabbit IgG in phosphate buffered saline , pH 7.4, 150mM NaCl, 0.02% sodium azide and 50% glycerol. Store at +4°C short term. Store at -20°C long term. Avoid freeze / thaw cycle.

Mras Antibody - Protein Information

Name MRAS

Synonyms RRAS3

Function

Serves as an important signal transducer for a novel upstream stimuli in controlling cell proliferation. Activates the MAP kinase pathway.

Cellular Location

Cell membrane; Lipid-anchor; Cytoplasmic side

Tissue Location

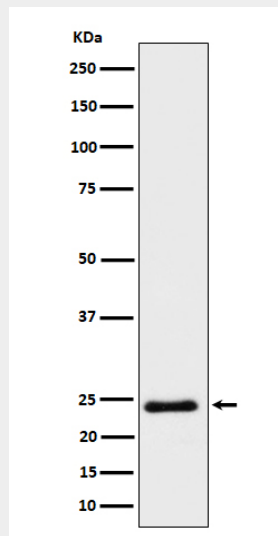
Expression highly restricted to the brain and heart

Mras Antibody - Protocols

Provided below are standard protocols that you may find useful for product applications.

- [Western Blot](#)
- [Blocking Peptides](#)
- [Dot Blot](#)
- [Immunohistochemistry](#)
- [Immunofluorescence](#)
- [Immunoprecipitation](#)
- [Flow Cytometry](#)
- [Cell Culture](#)

Mras Antibody - Images



Western blot analysis of Mras expression in HeLa cell lysate.