

AdSS 2 Antibody
Rabbit mAb
Catalog # AP92961

Specification

AdSS 2 Antibody - Product Information

| | |
|------------------------|------------------------|
| Application | WB, FC, ICC |
| Primary Accession | P30520 |
| Reactivity | Rat |
| Clonality | Monoclonal |
| Other Names | |
| ADEH; ADSS; AMPSase 2; | |
| Isotype | Rabbit IgG |
| Host | Rabbit |
| Calculated MW | 50097 Da |

AdSS 2 Antibody - Additional Information

| | |
|------------------------------|--|
| Purification | Affinity-chromatography |
| Immunogen | A synthesized peptide derived from human AdSS 2 |
| Description | Plays an important role in the de novo pathway and in the salvage pathway of purine nucleotide biosynthesis. Catalyzes the first committed step in the biosynthesis of AMP from IMP. |
| Storage Condition and Buffer | Rabbit IgG in phosphate buffered saline , pH 7.4, 150mM NaCl, 0.02% sodium azide and 50% glycerol. Store at +4°C short term. Store at -20°C long term. Avoid freeze / thaw cycle. |

AdSS 2 Antibody - Protein Information

Name ADSS2 ([HGNC:292](#))

Function

Plays an important role in the de novo pathway and in the salvage pathway of purine nucleotide biosynthesis. Catalyzes the first committed step in the biosynthesis of AMP from IMP.

Cellular Location

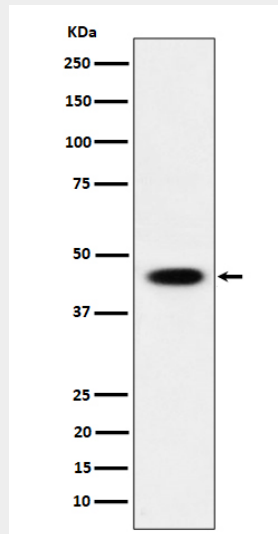
Cytoplasm {ECO:0000255|HAMAP-Rule:MF_03127}. Mitochondrion {ECO:0000250|UniProtKB:A4Z6H1}. Note=Partially associated with particulate fractions

AdSS 2 Antibody - Protocols

Provided below are standard protocols that you may find useful for product applications.

- [Western Blot](#)
- [Blocking Peptides](#)
- [Dot Blot](#)
- [Immunohistochemistry](#)
- [Immunofluorescence](#)
- [Immunoprecipitation](#)
- [Flow Cytometry](#)
- [Cell Culture](#)

AdSS 2 Antibody - Images



Western blot analysis of AdSS 2 expression in 293 cell lysate.