

**RPL10A Antibody**  
Rabbit mAb  
Catalog # AP92960

## Specification

---

### RPL10A Antibody - Product Information

Application	WB, IHC, FC, ICC
Primary Accession	<a href="#">P62906</a>
Reactivity	Rat
Clonality	Monoclonal
<b>Other Names</b>	
CSA19; L10A; NEDD6; rpl10a;	
Isotype	Rabbit IgG
Host	Rabbit
Calculated MW	24831 Da

### RPL10A Antibody - Additional Information

Purification	Affinity-chromatography
Immunogen	A synthesized peptide derived from human RPL10A
Description	Component of the large ribosomal subunit.
Storage Condition and Buffer	Rabbit IgG in phosphate buffered saline , pH 7.4, 150mM NaCl, 0.02% sodium azide and 50% glycerol. Store at +4°C short term. Store at -20°C long term. Avoid freeze / thaw cycle.

### RPL10A Antibody - Protein Information

**Name** RPL10A

**Synonyms** NEDD6

#### Function

Component of the large ribosomal subunit (PubMed: [12962325](http://www.uniprot.org/citations/12962325), PubMed: [23636399](http://www.uniprot.org/citations/23636399), PubMed: [32669547](http://www.uniprot.org/citations/32669547)). The ribosome is a large ribonucleoprotein complex responsible for the synthesis of proteins in the cell (PubMed: [12962325](http://www.uniprot.org/citations/12962325), PubMed: [23636399](http://www.uniprot.org/citations/23636399), PubMed: [32669547](http://www.uniprot.org/citations/32669547)).

#### Cellular Location

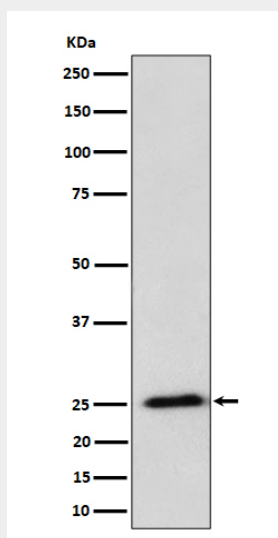
Cytoplasm.

## RPL10A Antibody - Protocols

Provided below are standard protocols that you may find useful for product applications.

- [Western Blot](#)
- [Blocking Peptides](#)
- [Dot Blot](#)
- [Immunohistochemistry](#)
- [Immunofluorescence](#)
- [Immunoprecipitation](#)
- [Flow Cytometry](#)
- [Cell Culture](#)

## RPL10A Antibody - Images



Western blot analysis of RPL10A expression in HeLa cell lysate.