

**CEP43 Antibody**  
Rabbit mAb  
Catalog # AP92943

## Specification

---

### CEP43 Antibody - Product Information

Application	WB, ICC
Primary Accession	<a href="#">O95684</a>
Reactivity	Rat
Clonality	Monoclonal
<b>Other Names</b>	
FGFR1OP; FOP;	
Isotype	Rabbit IgG
Host	Rabbit
Calculated MW	43065 Da

### CEP43 Antibody - Additional Information

Purification	Affinity-chromatography
Immunogen	A synthesized peptide derived from human CEP43
Description	Required for anchoring microtubules to the centrosomes.
Storage Condition and Buffer	Rabbit IgG in phosphate buffered saline , pH 7.4, 150mM NaCl, 0.02% sodium azide and 50% glycerol. Store at +4°C short term. Store at -20°C long term. Avoid freeze / thaw cycle.

### CEP43 Antibody - Protein Information

**Name** CEP43 ([HGNC:17012](#))

**Synonyms** FGFR1OP, FOP

#### Function

Required for anchoring microtubules to the centrosomes (PubMed: [16314388](http://www.uniprot.org/citations/16314388), PubMed: [28659385](http://www.uniprot.org/citations/28659385)). Required for ciliation (PubMed: [28625565](http://www.uniprot.org/citations/28625565), PubMed: [28659385](http://www.uniprot.org/citations/28659385)).

#### Cellular Location

Cytoplasm, cytoskeleton, microtubule organizing center, centrosome. Cytoplasm, cytoskeleton, microtubule organizing center, centrosome, centriole. Cytoplasm, cytoskeleton, cilium basal body Note=Associated with gamma-tubulin (PubMed:16314388). Localizes on both mother and daughter centrioles (PubMed:28428259, PubMed:28625565) Localizes to an axial position on the

mother centriole (PubMed:28625565). Localizes to the distal end of the centriole partly on the subdistal appendage region (PubMed:28659385)

#### Tissue Location

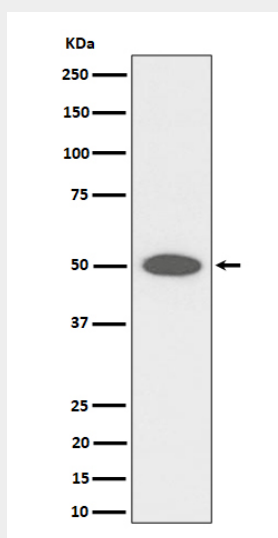
Ubiquitous. Highly expressed in heart, liver, muscle, kidney, intestine, colon, adrenal gland, prostate, testis, and pancreas.

#### CEP43 Antibody - Protocols

Provided below are standard protocols that you may find useful for product applications.

- [Western Blot](#)
- [Blocking Peptides](#)
- [Dot Blot](#)
- [Immunohistochemistry](#)
- [Immunofluorescence](#)
- [Immunoprecipitation](#)
- [Flow Cytometry](#)
- [Cell Culture](#)

#### CEP43 Antibody - Images



Western blot analysis of CEP43 expression in HeLa cell lysate.