

EPHX2 Antibody
Rabbit mAb
Catalog # AP92925

Specification

EPHX2 Antibody - Product Information

Application	WB
Primary Accession	P34913
Clonality	Monoclonal
Other Names	
CEH; EPHX2; Epoxide hydrolase 2; SHE;	
Isotype	Rabbit IgG
Host	Rabbit
Calculated MW	62616 Da

EPHX2 Antibody - Additional Information

Purification	Affinity-chromatography
Immunogen	A synthesized peptide derived from human EPHX2
Description	Acts on epoxides (alkene oxides, oxiranes) and arene oxides. Plays a role in xenobiotic metabolism by degrading potentially toxic epoxides. Also determines steady-state levels of physiological mediators. Has low phosphatase activity.
Storage Condition and Buffer	Rabbit IgG in phosphate buffered saline , pH 7.4, 150mM NaCl, 0.02% sodium azide and 50% glycerol. Store at +4°C short term. Store at -20°C long term. Avoid freeze / thaw cycle.

EPHX2 Antibody - Protein Information

Name EPHX2 ([HGNC:3402](#))

Function

Bifunctional enzyme (PubMed:12574510). The C-terminal domain has epoxide hydrolase activity and acts on epoxides (alkene oxides, oxiranes) and arene oxides (PubMed:12574510, PubMed:12869654, PubMed:22798687). Plays a role in xenobiotic metabolism by degrading potentially toxic epoxides (By similarity). Also determines steady- state levels of physiological mediators (PubMed:12574510, PubMed:12869654, PubMed:21217101, PubMed:22798687).

Cellular Location

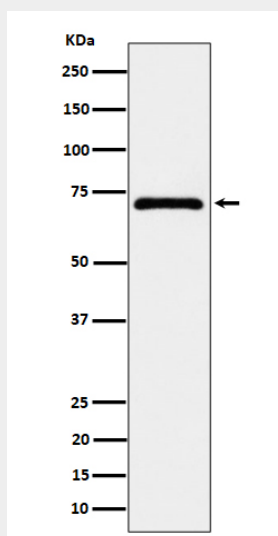
Cytoplasm. Peroxisome.

EPHX2 Antibody - Protocols

Provided below are standard protocols that you may find useful for product applications.

- [Western Blot](#)
- [Blocking Peptides](#)
- [Dot Blot](#)
- [Immunohistochemistry](#)
- [Immunofluorescence](#)
- [Immunoprecipitation](#)
- [Flow Cytometry](#)
- [Cell Culture](#)

EPHX2 Antibody - Images



Western blot analysis of EPHX2 expression in MCF7 cell lysate.