

**NUP50 Antibody**  
Rabbit mAb  
Catalog # AP92924

## Specification

---

### NUP50 Antibody - Product Information

|                         |                        |
|-------------------------|------------------------|
| Application             | WB, IHC, ICC           |
| Primary Accession       | <a href="#">O9UKX7</a> |
| Reactivity              | Rat                    |
| Clonality               | Monoclonal             |
| <b>Other Names</b>      |                        |
| NPAP60; NPAP60L; Nup50; |                        |
| Isotype                 | Rabbit IgG             |
| Host                    | Rabbit                 |
| Calculated MW           | 50144 Da               |

### NUP50 Antibody - Additional Information

|                              |  |
|------------------------------|--|
| Purification                 | <b>Affinity-chromatography</b>   |
| Immunogen                    | <b>A synthesized peptide derived from human NUP50</b>  |
| Description                  | <b>Component of the nuclear pore complex that has a direct role in nuclear protein import. Actively displaces NLSs from importin-alpha, and facilitates disassembly of the importin-alpha:beta-cargo complex and importin recycling.</b> |
| Storage Condition and Buffer | <b>Rabbit IgG in phosphate buffered saline , pH 7.4, 150mM NaCl, 0.02% sodium azide and 50% glycerol. Store at +4°C short term. Store at -20°C long term. Avoid freeze / thaw cycle.</b>   |

### NUP50 Antibody - Protein Information

**Name** NUP50

**Synonyms** NPAP60L

#### Function

Component of the nuclear pore complex that has a direct role in nuclear protein import (PubMed:<a href="http://www.uniprot.org/citations/20016008" target="\_blank">20016008</a>). Actively displaces NLSs from importin-alpha, and facilitates disassembly of the importin-alpha:beta-cargo complex and importin recycling (PubMed:<a href="http://www.uniprot.org/citations/20016008" target="\_blank">20016008</a>). Interacts with regulatory proteins of cell cycle progression including CDKN1B (By similarity). This interaction is required for correct intracellular transport and degradation of CDKN1B (By similarity).

### Cellular Location

Nucleus, nuclear pore complex. Nucleus membrane {ECO:0000250|UniProtKB:O08587}; Peripheral membrane protein {ECO:0000250|UniProtKB:O08587}; Nucleoplasmic side {ECO:0000250|UniProtKB:O08587}. Note=Localizes to the nucleoplasmic fibrils of the nuclear pore complex (By similarity). Dissociates from the NPC structure early during prophase of mitosis (PubMed:12802065) Associates with the newly formed nuclear membrane during telophase (PubMed:12802065). In the testis, the localization changes during germ cell differentiation from the nuclear surface in spermatocytes to the whole nucleus (interior) in spermatids and back to the nuclear surface in spermatozoa (By similarity). {ECO:0000250|UniProtKB:O08587, ECO:0000269|PubMed:12802065}

### Tissue Location

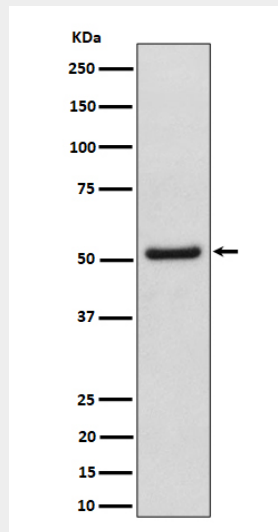
Ubiquitous. Highest levels in testis, peripheral blood leukocytes and fetal liver

### NUP50 Antibody - Protocols

Provided below are standard protocols that you may find useful for product applications.

- [Western Blot](#)
- [Blocking Peptides](#)
- [Dot Blot](#)
- [Immunohistochemistry](#)
- [Immunofluorescence](#)
- [Immunoprecipitation](#)
- [Flow Cytometry](#)
- [Cell Culture](#)

### NUP50 Antibody - Images



Western blot analysis of NUP50 expression in HeLa cell lysate.