

Phospho-Nucleolin (T84) Antibody
Rabbit mAb
Catalog # AP92921

Specification

Phospho-Nucleolin (T84) Antibody - Product Information

Application	WB, IHC
Primary Accession	P19338
Clonality	Monoclonal
Other Names	
NCL; Nucl; Nucleolin; Protein C23;	
Isotype	Rabbit IgG
Host	Rabbit
Calculated MW	76614 Da

Phospho-Nucleolin (T84) Antibody - Additional Information

Purification	Affinity-chromatography
Immunogen	A synthesized peptide derived from human Phospho-Nucleolin (T84)
Description	Nucleolin is the major nucleolar protein of growing eukaryotic cells. It is found associated with intranucleolar chromatin and pre-ribosomal particles.
Storage Condition and Buffer	Rabbit IgG in phosphate buffered saline , pH 7.4, 150mM NaCl, 0.02% sodium azide and 50% glycerol. Store at +4°C short term. Store at -20°C long term. Avoid freeze / thaw cycle.

Phospho-Nucleolin (T84) Antibody - Protein Information

Name NCL

Function

Nucleolin is the major nucleolar protein of growing eukaryotic cells. It is found associated with intranucleolar chromatin and pre-ribosomal particles. It induces chromatin decondensation by binding to histone H1. It is thought to play a role in pre-rRNA transcription and ribosome assembly. May play a role in the process of transcriptional elongation. Binds RNA oligonucleotides with 5'-UUAGGG- 3' repeats more tightly than the telomeric single-stranded DNA 5'- TTAGGG-3' repeats.

Cellular Location

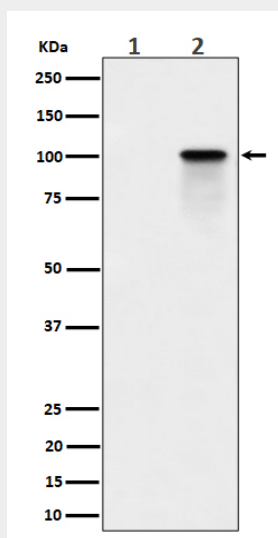
Nucleus, nucleolus. Cytoplasm. Note=Localized in cytoplasmic mRNP granules containing untranslated mRNAs

Phospho-Nucleolin (T84) Antibody - Protocols

Provided below are standard protocols that you may find useful for product applications.

- [Western Blot](#)
- [Blocking Peptides](#)
- [Dot Blot](#)
- [Immunohistochemistry](#)
- [Immunofluorescence](#)
- [Immunoprecipitation](#)
- [Flow Cytometry](#)
- [Cell Culture](#)

Phospho-Nucleolin (T84) Antibody - Images



Western blot analysis of Phospho-Nucleolin (T84) expression in (1) K562 cell lysate; (2) K562 cell treated with Calyculin A lysate.