

NUP50 Antibody
Rabbit mAb
Catalog # AP92920

Specification

NUP50 Antibody - Product Information

Application	WB, ICC
Primary Accession	O9UKX7
Reactivity	Rat
Clonality	Monoclonal
Other Names	
NPAP60; NPAP60L; Nucleoporin 50kDa; Nup50;	
Isotype	Rabbit IgG
Host	Rabbit
Calculated MW	50144 Da

NUP50 Antibody - Additional Information

Purification	Affinity-chromatography
Immunogen	A synthesized peptide derived from human NUP50
Description	Component of the nuclear pore complex that has a direct role in nuclear protein import. Actively displaces NLSs from importin-alpha, and facilitates disassembly of the importin-alpha:beta-cargo complex and importin recycling.
Storage Condition and Buffer	Rabbit IgG in phosphate buffered saline , pH 7.4, 150mM NaCl, 0.02% sodium azide and 50% glycerol. Store at +4°C short term. Store at -20°C long term. Avoid freeze / thaw cycle.

NUP50 Antibody - Protein Information

Name NUP50

Synonyms NPAP60L

Function

Component of the nuclear pore complex that has a direct role in nuclear protein import (PubMed:[20016008](http://www.uniprot.org/citations/20016008)). Actively displaces NLSs from importin-alpha, and facilitates disassembly of the importin-alpha:beta-cargo complex and importin recycling (PubMed:[20016008](http://www.uniprot.org/citations/20016008)). Interacts with regulatory proteins of cell cycle progression including CDKN1B (By similarity). This interaction is required for correct intracellular transport and degradation of CDKN1B (By similarity).

Cellular Location

Nucleus, nuclear pore complex. Nucleus membrane {ECO:0000250|UniProtKB:O08587}; Peripheral membrane protein {ECO:0000250|UniProtKB:O08587}; Nucleoplasmic side {ECO:0000250|UniProtKB:O08587}. Note=Localizes to the nucleoplasmic fibrils of the nuclear pore complex (By similarity). Dissociates from the NPC structure early during prophase of mitosis (PubMed:12802065) Associates with the newly formed nuclear membrane during telophase (PubMed:12802065). In the testis, the localization changes during germ cell differentiation from the nuclear surface in spermatocytes to the whole nucleus (interior) in spermatids and back to the nuclear surface in spermatozoa (By similarity). {ECO:0000250|UniProtKB:O08587, ECO:0000269|PubMed:12802065}

Tissue Location

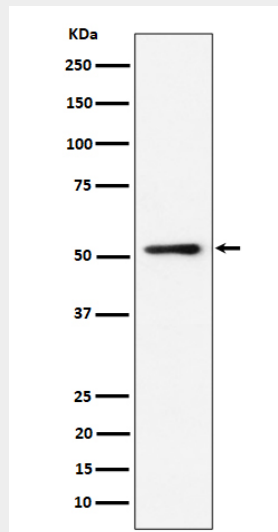
Ubiquitous. Highest levels in testis, peripheral blood leukocytes and fetal liver

NUP50 Antibody - Protocols

Provided below are standard protocols that you may find useful for product applications.

- [Western Blot](#)
- [Blocking Peptides](#)
- [Dot Blot](#)
- [Immunohistochemistry](#)
- [Immunofluorescence](#)
- [Immunoprecipitation](#)
- [Flow Cytometry](#)
- [Cell Culture](#)

NUP50 Antibody - Images



Western blot analysis of NUP50 expression in HeLa cell lysate.