

**SPINK5 / LEKTI Antibody**  
Rabbit mAb  
Catalog # AP92918

## Specification

---

### SPINK5 / LEKTI Antibody - Product Information

|                             |                        |
|-----------------------------|------------------------|
| Application                 | WB, ICC                |
| Primary Accession           | <a href="#">O9NQ38</a> |
| Reactivity                  | Rat                    |
| Clonality                   | Monoclonal             |
| <b>Other Names</b>          |                        |
| LEKTI; NETS; SPINK5; VAKTI; |                        |
| Isotype                     | Rabbit IgG             |
| Host                        | Rabbit                 |
| Calculated MW               | 120714 Da              |

### SPINK5 / LEKTI Antibody - Additional Information

|                              |  |
|------------------------------|--|
| Purification                 | Affinity-chromatography  |
| Immunogen                    | A synthesized peptide derived from human SPINK5 / LEKTI  |
| Description                  | Serine protease inhibitor, probably important for the anti-inflammatory and/or antimicrobial protection of mucous epithelia. Contribute to the integrity and protective barrier function of the skin by regulating the activity of defense-activating and desquamation-involved proteases. Inhibits KLK5, it's major target, in a pH-dependent manner. Inhibits KLK7, KLK14 CASP14, and trypsin. |
| Storage Condition and Buffer | Rabbit IgG in phosphate buffered saline , pH 7.4, 150mM NaCl, 0.02% sodium azide and 50% glycerol. Store at +4°C short term. Store at -20°C long term. Avoid freeze / thaw cycle.  |

### SPINK5 / LEKTI Antibody - Protein Information

**Name** SPINK5

#### Function

Serine protease inhibitor, probably important for the anti- inflammatory and/or antimicrobial protection of mucous epithelia. Contribute to the integrity and protective barrier function of the skin by regulating the activity of defense-activating and desquamation- involved proteases. Inhibits KLK5, it's major target, in a pH-dependent manner. Inhibits KLK7, KLK14 CASP14, and trypsin.

## Cellular Location

Secreted.

## Tissue Location

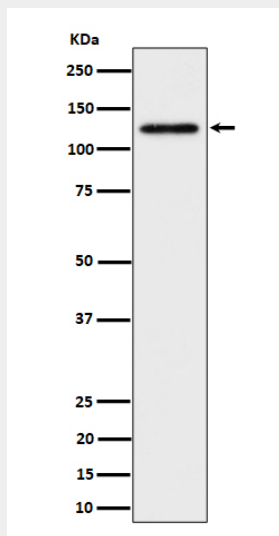
Highly expressed in the thymus and stratum corneum. Also found in the oral mucosa, parathyroid gland, Bartholin's glands, tonsils, and vaginal epithelium. Very low levels are detected in lung, kidney, and prostate.

## SPINK5 / LEKTI Antibody - Protocols

Provided below are standard protocols that you may find useful for product applications.

- [Western Blot](#)
- [Blocking Peptides](#)
- [Dot Blot](#)
- [Immunohistochemistry](#)
- [Immunofluorescence](#)
- [Immunoprecipitation](#)
- [Flow Cytometry](#)
- [Cell Culture](#)

## SPINK5 / LEKTI Antibody - Images



Western blot analysis of SPINK5 / LEKTI expression in HeLa cell lysate.