

PEF1 Antibody
Rabbit mAb
Catalog # AP92916

Specification

PEF1 Antibody - Product Information

Application	WB
Primary Accession	Q9UBV8
Reactivity	Rat
Clonality	Monoclonal
Other Names	
ABP32; PEF; pef1; PEF1A; Peflin;	
Isotype	Rabbit IgG
Host	Rabbit
Calculated MW	30381 Da

PEF1 Antibody - Additional Information

Purification	Affinity-chromatography
Immunogen	A synthesized peptide derived from human PEF1
Description	Calcium-binding protein that acts as an adapter that bridges unrelated proteins or stabilizes weak protein-protein complexes in response to calcium. Together with PDCD6, acts as calcium-dependent adapter for the BCR(KLHL12) complex, a complex involved in endoplasmic reticulum (ER)-Golgi transport by regulating the size of COPII coats (PubMed:27716508).
Storage Condition and Buffer	Rabbit IgG in phosphate buffered saline , pH 7.4, 150mM NaCl, 0.02% sodium azide and 50% glycerol. Store at +4°C short term. Store at -20°C long term. Avoid freeze / thaw cycle.

PEF1 Antibody - Protein Information

Name PEF1 ([HGNC:30009](#))

Synonyms ABP32

Function

Calcium-binding protein that acts as an adapter that bridges unrelated proteins or stabilizes weak protein-protein complexes in response to calcium. Together with PDCD6, acts as a calcium-dependent adapter for the BCR(KLHL12) complex, a complex involved in endoplasmic reticulum (ER)-Golgi transport by regulating the size of COPII coats (PubMed:[27716508](http://www.uniprot.org/citations/27716508)). In response

to cytosolic calcium increase, the heterodimer formed with PDCD6 interacts with, and bridges together the BCR(KLHL12) complex and SEC31 (SEC31A or SEC31B), promoting monoubiquitination of SEC31 and subsequent collagen export, which is required for neural crest specification (PubMed:27716508). Its role in the heterodimer formed with PDCD6 is however unclear: some evidence shows that PEF1 and PDCD6 work together and promote association between PDCD6 and SEC31 in presence of calcium (PubMed:27716508). Other reports show that PEF1 dissociates from PDCD6 in presence of calcium, and may act as a negative regulator of PDCD6 (PubMed:11278427). Also acts as a negative regulator of ER-Golgi transport; possibly by inhibiting interaction between PDCD6 and SEC31 (By similarity).

Cellular Location

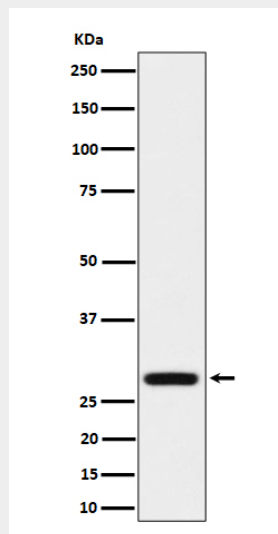
Cytoplasm. Endoplasmic reticulum {ECO:0000250|UniProtKB:Q641Z8}. Membrane; Peripheral membrane protein. Cytoplasmic vesicle, COPII-coated vesicle membrane; Peripheral membrane protein. Note=Membrane-associated in the presence of Ca(2+) (PubMed:11278427). Localizes to endoplasmic reticulum exit site (ERES) (By similarity). {ECO:0000250|UniProtKB:Q641Z8, ECO:0000269|PubMed:11278427}

PEF1 Antibody - Protocols

Provided below are standard protocols that you may find useful for product applications.

- [Western Blot](#)
- [Blocking Peptides](#)
- [Dot Blot](#)
- [Immunohistochemistry](#)
- [Immunofluorescence](#)
- [Immunoprecipitation](#)
- [Flow Cytometry](#)
- [Cell Culture](#)

PEF1 Antibody - Images



Western blot analysis of PEF1 expression in HeLa cell lysate.