

RBM3 Antibody
Rabbit mAb
Catalog # AP92912

Specification

RBM3 Antibody - Product Information

Application	WB, IHC, FC, ICC
Primary Accession	P98179
Reactivity	Human, Mouse
Clonality	Monoclonal
Other Names	
Rbm3; RNPL;	
Isotype	Rabbit IgG
Host	Rabbit
Calculated MW	17170 Da

RBM3 Antibody - Additional Information

Purification	Affinity-chromatography
Immunogen	A synthesized peptide derived from human RBM3
Description	Cold-inducible mRNA binding protein that enhances global protein synthesis at both physiological and mild hypothermic temperatures. Reduces the relative abundance of microRNAs, when overexpressed. Enhances phosphorylation of translation initiation factors and active polysome formation.
Storage Condition and Buffer	Rabbit IgG in phosphate buffered saline , pH 7.4, 150mM NaCl, 0.02% sodium azide and 50% glycerol. Store at +4°C short term. Store at -20°C long term. Avoid freeze / thaw cycle.

RBM3 Antibody - Protein Information

Name RBM3

Synonyms RNPL

Function

Cold-inducible mRNA binding protein that enhances global protein synthesis at both physiological and mild hypothermic temperatures. Reduces the relative abundance of microRNAs, when overexpressed. Enhances phosphorylation of translation initiation factors and active polysome formation (By similarity).

Cellular Location

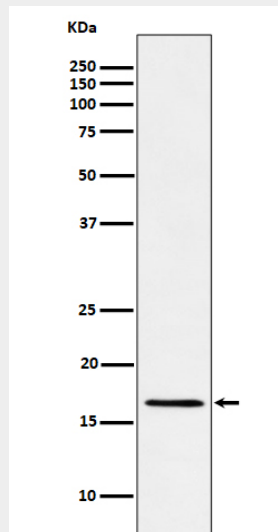
Nucleus. Cytoplasm. Cell projection, dendrite. Note=Localizes in mRNA granules in dendrites.

RBM3 Antibody - Protocols

Provided below are standard protocols that you may find useful for product applications.

- [Western Blot](#)
- [Blocking Peptides](#)
- [Dot Blot](#)
- [Immunohistochemistry](#)
- [Immunofluorescence](#)
- [Immunoprecipitation](#)
- [Flow Cytometry](#)
- [Cell Culture](#)

RBM3 Antibody - Images



Western blot analysis of RBM3 expression in Jurkat cell lysate.