

Phospho-eIF4B (S406) Antibody
Rabbit mAb
Catalog # AP92908

Specification

Phospho-eIF4B (S406) Antibody - Product Information

Application	WB, IHC
Primary Accession	P23588
Reactivity	Rat
Clonality	Monoclonal
Other Names	
EIF4B;	
Isotype	Rabbit IgG
Host	Rabbit
Calculated MW	69151 Da

Phospho-eIF4B (S406) Antibody - Additional Information

Purification	Affinity-chromatography
Immunogen	A synthesized peptide derived from human Phospho-eIF4B (S406)
Description	Required for the binding of mRNA to ribosomes. Functions in close association with EIF4-F and EIF4-A. Binds near the 5'-terminal cap of mRNA in presence of EIF-4F and ATP. Promotes the ATPase activity and the ATP-dependent RNA unwinding activity of both EIF4-A and EIF4-F.
Storage Condition and Buffer	Rabbit IgG in phosphate buffered saline , pH 7.4, 150mM NaCl, 0.02% sodium azide and 50% glycerol. Store at +4°C short term. Store at -20°C long term. Avoid freeze / thaw cycle.

Phospho-eIF4B (S406) Antibody - Protein Information

Name EIF4B

Function

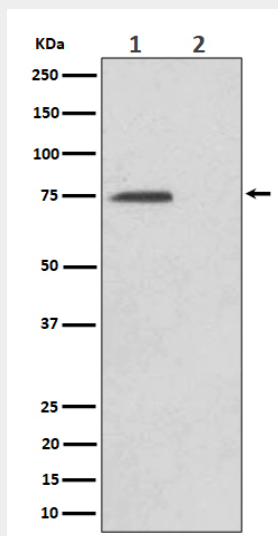
Required for the binding of mRNA to ribosomes. Functions in close association with EIF4-F and EIF4-A. Binds near the 5'-terminal cap of mRNA in presence of EIF-4F and ATP. Promotes the ATPase activity and the ATP-dependent RNA unwinding activity of both EIF4-A and EIF4-F.

Phospho-eIF4B (S406) Antibody - Protocols

Provided below are standard protocols that you may find useful for product applications.

- [Western Blot](#)
- [Blocking Peptides](#)
- [Dot Blot](#)
- [Immunohistochemistry](#)
- [Immunofluorescence](#)
- [Immunoprecipitation](#)
- [Flow Cytometry](#)
- [Cell Culture](#)

Phospho-eIF4B (S406) Antibody - Images



Western blot analysis of Phospho-eIF4B (S406) expression in (1) HeLa cell lysate; (2) HeLa cell treated with Alkaline Phosphatase lysate.