

**RASSF2 Antibody**  
Rabbit mAb  
Catalog # AP92898

## Specification

---

### RASSF2 Antibody - Product Information

Application	WB
Primary Accession	<a href="#">P50749</a>
Clonality	<b>Monoclonal</b>
<b>Other Names</b>	
CENP 34; RASFADIN; RASSF2;	
Isotype	<b>Rabbit IgG</b>
Host	<b>Rabbit</b>
Calculated MW	<b>37790 Da</b>

### RASSF2 Antibody - Additional Information

Purification	<b>Affinity-chromatography</b>
Immunogen	<b>A synthesized peptide derived from human RASSF2</b>
Description	<b>Potential tumor suppressor. Acts as a KRAS-specific effector protein. May promote apoptosis and cell cycle arrest.</b>
Storage Condition and Buffer	<b>Rabbit IgG in phosphate buffered saline , pH 7.4, 150mM NaCl, 0.02% sodium azide and 50% glycerol. Store at +4°C short term. Store at -20°C long term. Avoid freeze / thaw cycle.</b>

### RASSF2 Antibody - Protein Information

**Name** RASSF2

**Synonyms** CENP-34 {ECO:0000303|PubMed:20813266}, K

#### Function

Potential tumor suppressor. Acts as a KRAS-specific effector protein. May promote apoptosis and cell cycle arrest. Stabilizes STK3/MST2 by protecting it from proteasomal degradation.

#### Cellular Location

Nucleus. Cytoplasm. Chromosome, centromere, kinetochore. Note=Translocates to the cytoplasm in the presence of STK3/MST2 and STK4/MST1

#### Tissue Location

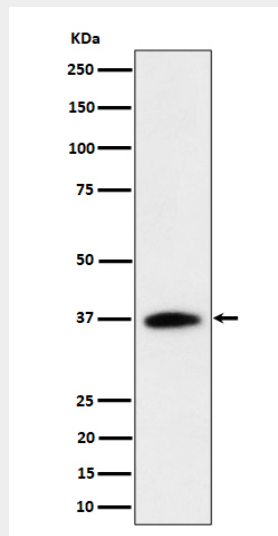
Widely expressed with highest levels in brain, placenta, peripheral blood and lung. Frequently down-regulated in lung tumor cell lines.

## RASSF2 Antibody - Protocols

Provided below are standard protocols that you may find useful for product applications.

- [Western Blot](#)
- [Blocking Peptides](#)
- [Dot Blot](#)
- [Immunohistochemistry](#)
- [Immunofluorescence](#)
- [Immunoprecipitation](#)
- [Flow Cytometry](#)
- [Cell Culture](#)

## RASSF2 Antibody - Images



Western blot analysis of RASSF2 expression in Jurkat cell lysate.