

ING1 Antibody
Rabbit mAb
Catalog # AP92897

Specification

ING1 Antibody - Product Information

Application	WB
Primary Accession	O9UK53
Reactivity	Rat
Clonality	Monoclonal

Other Names

Growth inhibitor ING1; Ing1; Inhibitor of growth 1; mING1h; p24ING1c; p33; p33ING1; p33ING1b; p33ING1c; p37Ing1b; p47; p47ING1a; Tumor suppressor ING1;

Isotype	Rabbit IgG
Host	Rabbit
Calculated MW	46738 Da

ING1 Antibody - Additional Information

Purification	Affinity-chromatography
Immunogen	A synthesized peptide derived from human ING1
Description	Cooperates with p53/TP53 in the negative regulatory pathway of cell growth by modulating p53-dependent transcriptional activation. Implicated as a tumor suppressor gene.
Storage Condition and Buffer	Rabbit IgG in phosphate buffered saline , pH 7.4, 150mM NaCl, 0.02% sodium azide and 50% glycerol. Store at +4°C short term. Store at -20°C long term. Avoid freeze / thaw cycle.

ING1 Antibody - Protein Information

Name ING1

Function

Cooperates with p53/TP53 in the negative regulatory pathway of cell growth by modulating p53-dependent transcriptional activation. Implicated as a tumor suppressor gene.

Cellular Location

Nucleus.

Tissue Location

Isoform 2 was expressed in all normal tissues and cells examined, as well as in all breast cancer and melanoma cell lines examined. Isoform 3 was expressed in testis, liver, and kidney, weakly expressed in colon and brain and not expressed in breast and cultured melanocytes. Isoform 4 was

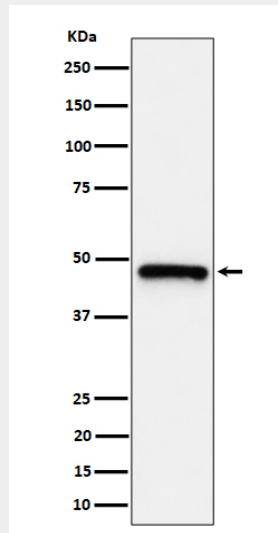
highly expressed in testis and weakly expressed in brain, but not expressed in breast, colon, kidney, melanocytes, breast cancer or melanoma cell lines

ING1 Antibody - Protocols

Provided below are standard protocols that you may find useful for product applications.

- [Western Blot](#)
- [Blocking Peptides](#)
- [Dot Blot](#)
- [Immunohistochemistry](#)
- [Immunofluorescence](#)
- [Immunoprecipitation](#)
- [Flow Cytometry](#)
- [Cell Culture](#)

ING1 Antibody - Images



Western blot analysis of ING1 expression in HeLa cell lysate.