

USF1 Antibody
Rabbit mAb
Catalog # AP92896

Specification

USF1 Antibody - Product Information

Application	WB
Primary Accession	P22415
Reactivity	Rat
Clonality	Monoclonal

Other Names

bHLHb11; FCHL; FCHL1; HYPLIP1; Major late transcription factor 1; MLTF; MLTFI; UEF; Upstream stimulatory factor 1; USF;

Isotype	Rabbit IgG
Host	Rabbit
Calculated MW	33538 Da

USF1 Antibody - Additional Information

Purification	Affinity-chromatography
Immunogen	A synthesized peptide derived from human USF1
Description	Transcription factor that binds to a symmetrical DNA sequence (E-boxes) (5'-CACGTG-3') that is found in a variety of viral and cellular promoters.
Storage Condition and Buffer	Rabbit IgG in phosphate buffered saline , pH 7.4, 150mM NaCl, 0.02% sodium azide and 50% glycerol. Store at +4°C short term. Store at -20°C long term. Avoid freeze / thaw cycle.

USF1 Antibody - Protein Information

Name USF1

Synonyms BHLHB11, USF

Function

Transcription factor that binds to a symmetrical DNA sequence (E-boxes) (5'-CACGTG-3') that is found in a variety of viral and cellular promoters.

Cellular Location

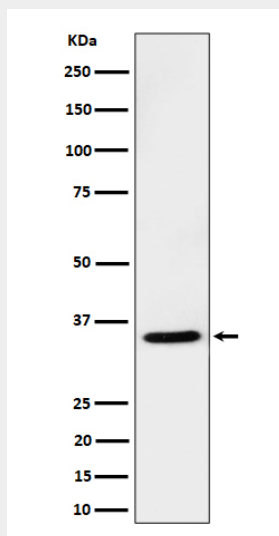
Nucleus.

USF1 Antibody - Protocols

Provided below are standard protocols that you may find useful for product applications.

- [Western Blot](#)
- [Blocking Peptides](#)
- [Dot Blot](#)
- [Immunohistochemistry](#)
- [Immunofluorescence](#)
- [Immunoprecipitation](#)
- [Flow Cytometry](#)
- [Cell Culture](#)

USF1 Antibody - Images



Western blot analysis of USF1 expression in Jurkat cell lysate.