

**DENN Antibody**  
Rabbit mAb  
Catalog # AP92890

## Specification

---

### DENN Antibody - Product Information

Application	WB, IHC
Primary Accession	<a href="#">Q8WYG6</a>
Reactivity	Rat
Clonality	Monoclonal
<b>Other Names</b>	
IG20; MADD; RAB3GEP;	
Isotype	Rabbit IgG
Host	Rabbit
Calculated MW	183303 Da

### DENN Antibody - Additional Information

Purification	<b>Affinity-chromatography</b>
Immunogen	<b>A synthesized peptide derived from human DENN</b>
Description	<b>Plays a significant role in regulating cell proliferation, survival and death through alternative mRNA splicing. Isoform 5 shows increased cell proliferation and isoform 2 shows decreased. Converts GDP-bound inactive form of RAB3A, RAB3C and RAB3D to the GTP-bound active forms.</b>
Storage Condition and Buffer	<b>Rabbit IgG in phosphate buffered saline , pH 7.4, 150mM NaCl, 0.02% sodium azide and 50% glycerol. Store at +4°C short term. Store at -20°C long term. Avoid freeze / thaw cycle.</b>

### DENN Antibody - Protein Information

**Name** MADD {ECO:0000312|EMBL:AAB57735.1, ECO:0000312|HGNC:HGNC:6766}

#### Function

Guanyl-nucleotide exchange factor that regulates small GTPases of the Rab family (PubMed:<a href="http://www.uniprot.org/citations/18559336" target="\_blank">18559336</a>, PubMed:<a href="http://www.uniprot.org/citations/20937701" target="\_blank">20937701</a>). Converts GDP-bound inactive form of RAB27A and RAB27B to the GTP-bound active forms (PubMed:<a href="http://www.uniprot.org/citations/18559336" target="\_blank">18559336</a>, PubMed:<a href="http://www.uniprot.org/citations/20937701" target="\_blank">20937701</a>). Converts GDP-bound inactive form of RAB3A, RAB3C and RAB3D to the GTP-bound active forms, GTPases involved in synaptic vesicle exocytosis and vesicle secretion (By similarity). Plays a role in synaptic vesicle formation and in vesicle trafficking at the neuromuscular junction (By similarity). Involved

in up-regulating a post-docking step of synaptic exocytosis in central synapses (By similarity). Probably by binding to the motor proteins KIF1B and KIF1A, mediates motor-dependent transport of GTP-RAB3A- positive vesicles to the presynaptic nerve terminals (By similarity). Plays a role in TNFA-mediated activation of the MAPK pathway, including ERK1/2 (PubMed:<a href="http://www.uniprot.org/citations/32761064" target="\_blank">32761064</a>). May link TNFRSF1A with MAP kinase activation (PubMed:<a href="http://www.uniprot.org/citations/9115275" target="\_blank">9115275</a>). May be involved in the regulation of TNFA-induced apoptosis (PubMed:<a href="http://www.uniprot.org/citations/11577081" target="\_blank">11577081</a>, PubMed:<a href="http://www.uniprot.org/citations/32761064" target="\_blank">32761064</a>).

### Cellular Location

Cell membrane. Cytoplasm. Cell projection, axon {ECO:0000250|UniProtKB:Q80U28}

### Tissue Location

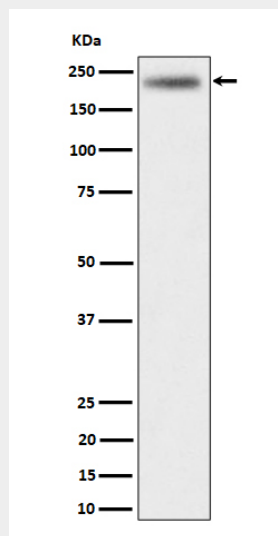
Expressed in testis, ovary, brain and heart (PubMed:8988362). Expressed in spleen, thymus, prostate, testis, ovary, small intestine and colon (PubMed:9115275). Expressed in liver (PubMed:9796103). [Isoform 2]: Expressed in the brain, breast, kidney, lung, ovary, pancreas, testis, uterus, stomach and thyroid [Isoform 4]: Expressed in the brain, breast, kidney, lung, ovary, pancreas, testis, uterus, stomach and thyroid [Isoform 6]: Not detected in the brain, breast, kidney, lung, ovary, pancreas, testis, uterus, stomach and thyroid

### DENN Antibody - Protocols

Provided below are standard protocols that you may find useful for product applications.

- [Western Blot](#)
- [Blocking Peptides](#)
- [Dot Blot](#)
- [Immunohistochemistry](#)
- [Immunofluorescence](#)
- [Immunoprecipitation](#)
- [Flow Cytometry](#)
- [Cell Culture](#)

### DENN Antibody - Images



Western blot analysis of DENN expression in HeLa cell lysate.