

Nodal Antibody
Rabbit mAb
Catalog # AP92882

Specification

Nodal Antibody - Product Information

Application	WB
Primary Accession	O96S42
Clonality	Monoclonal
Other Names	
HTX5; Nodal;	
Isotype	Rabbit IgG
Host	Rabbit
Calculated MW	39561 Da

Nodal Antibody - Additional Information

Purification	Affinity-chromatography
Immunogen	A synthesized peptide derived from human Nodal
Description	Essential for mesoderm formation and axial patterning during embryonic development.
Storage Condition and Buffer	Rabbit IgG in phosphate buffered saline , pH 7.4, 150mM NaCl, 0.02% sodium azide and 50% glycerol. Store at +4°C short term. Store at -20°C long term. Avoid freeze / thaw cycle.

Nodal Antibody - Protein Information

Name NODAL

Function

Essential for mesoderm formation and axial patterning during embryonic development.

Cellular Location

Secreted.

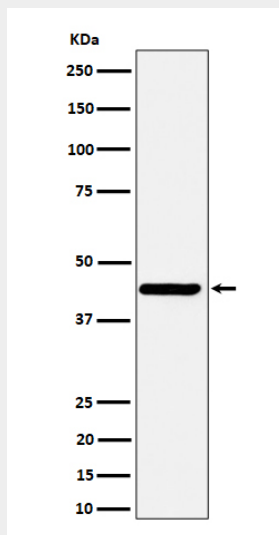
Nodal Antibody - Protocols

Provided below are standard protocols that you may find useful for product applications.

- [Western Blot](#)
- [Blocking Peptides](#)
- [Dot Blot](#)

- [Immunohistochemistry](#)
- [Immunofluorescence](#)
- [Immunoprecipitation](#)
- [Flow Cytometry](#)
- [Cell Culture](#)

Nodal Antibody - Images



Western blot analysis of Nodal expression in SH-SY5Y cell lysate.