

BLNK Antibody
Rabbit mAb
Catalog # AP92878

Specification

BLNK Antibody - Product Information

Application	WB, IHC
Primary Accession	O8WV28
Reactivity	Rat
Clonality	Monoclonal
Other Names	
AGM4; BASH; Bca; BLNK; Ly57; Lyw57; SLP65;	
Isotype	Rabbit IgG
Host	Rabbit
Calculated MW	50466 Da

BLNK Antibody - Additional Information

Purification	Affinity-chromatography
Immunogen	A synthesized peptide derived from human BLNK
Description	Functions as a central linker protein that bridges kinases associated with the B-cell receptor (BCR) with a multitude of signaling pathways, regulating biological outcomes of B-cell function and development. Plays a role in the activation of ERK/EPHB2, MAP kinase p38 and JNK.
Storage Condition and Buffer	Rabbit IgG in phosphate buffered saline , pH 7.4, 150mM NaCl, 0.02% sodium azide and 50% glycerol. Store at +4°C short term. Store at -20°C long term. Avoid freeze / thaw cycle.

BLNK Antibody - Protein Information

Name BLNK

Synonyms BASH, SLP65

Function

Functions as a central linker protein, downstream of the B- cell receptor (BCR), bridging the SYK kinase to a multitude of signaling pathways and regulating biological outcomes of B-cell function and development. Plays a role in the activation of ERK/EPHB2, MAP kinase p38 and JNK. Modulates AP1 activation. Important for the activation of NF-kappa-B and NFAT. Plays an important role in BCR- mediated PLCG1 and PLCG2 activation and Ca(2+) mobilization and is required for trafficking of the BCR to late endosomes. However, does not seem to be required for pre-BCR-mediated activation of MAP kinase and phosphatidyl-inositol 3 (PI3) kinase signaling. May be required for the

RAC1-JNK pathway. Plays a critical role in orchestrating the pro-B cell to pre-B cell transition. May play an important role in BCR- induced B-cell apoptosis.

Cellular Location

Cytoplasm. Cell membrane. Note=BCR activation results in the translocation to membrane fraction

Tissue Location

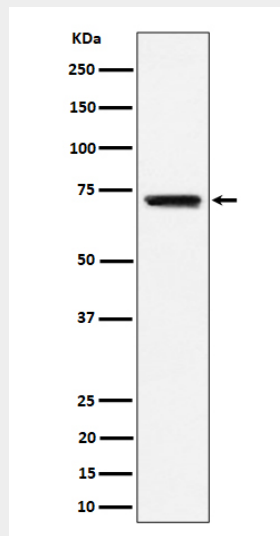
Expressed in B-cell lineage and fibroblast cell lines (at protein level). Highest levels of expression in the spleen, with lower levels in the liver, kidney, pancreas, small intestines and colon

BLNK Antibody - Protocols

Provided below are standard protocols that you may find useful for product applications.

- [Western Blot](#)
- [Blocking Peptides](#)
- [Dot Blot](#)
- [Immunohistochemistry](#)
- [Immunofluorescence](#)
- [Immunoprecipitation](#)
- [Flow Cytometry](#)
- [Cell Culture](#)

BLNK Antibody - Images



Western blot analysis of BLNK expression in Raji cell lysate.