

**Ube2L3 / UBCH7 Antibody**  
Rabbit mAb  
Catalog # AP92866

## Specification

---

### Ube2L3 / UBCH7 Antibody - Product Information

Application	WB, IHC, ICC
Primary Accession	<a href="#">P68036</a>
Reactivity	Rat
Clonality	Monoclonal
<b>Other Names</b>	
UBCE7; Ubch7; UbcM4; Ube2l3;	
Isotype	Rabbit IgG
Host	Rabbit
Calculated MW	17862 Da

### Ube2L3 / UBCH7 Antibody - Additional Information

Purification	Affinity-chromatography
Immunogen	A synthesized peptide derived from human Ube2L3 / UBCH7
Description	Accepts ubiquitin from the E1 complex and catalyzes its covalent attachment to other proteins. In vitro catalyzes 'Lys-11'-linked polyubiquitination. Involved in the selective degradation of short-lived and abnormal proteins. Down-regulated during the S-phase it is involved in progression through the cell cycle. Regulates nuclear hormone receptors transcriptional activity. May play a role in myelopoiesis.
Storage Condition and Buffer	Rabbit IgG in phosphate buffered saline , pH 7.4, 150mM NaCl, 0.02% sodium azide and 50% glycerol. Store at +4°C short term. Store at -20°C long term. Avoid freeze / thaw cycle.

### Ube2L3 / UBCH7 Antibody - Protein Information

**Name** UBE2L3

**Synonyms** UBCE7, UBCH7

#### Function

Ubiquitin-conjugating enzyme E2 that specifically acts with HECT-type and RBR family E3 ubiquitin-protein ligases. Does not function with most RING-containing E3 ubiquitin-protein ligases because it lacks intrinsic E3-independent reactivity with lysine: in contrast, it has activity with the RBR family E3 enzymes, such as PRKN, RNF31 and ARIH1, that function like RING-HECT hybrids.

Accepts ubiquitin from the E1 complex and catalyzes its covalent attachment to other proteins. In vitro catalyzes 'Lys-11'-linked polyubiquitination. Involved in the selective degradation of short-lived and abnormal proteins. Down-regulated during the S-phase it is involved in progression through the cell cycle. Regulates nuclear hormone receptors transcriptional activity. May play a role in myelopoiesis.

#### Cellular Location

Nucleus. Cytoplasm

#### Tissue Location

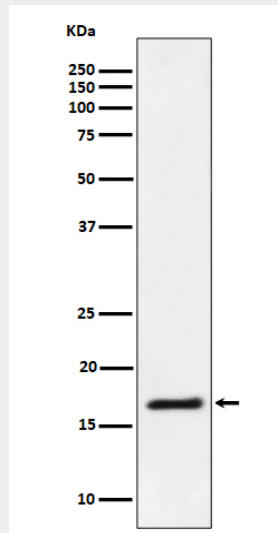
Ubiquitous, with highest expression in testis.

### Ube2L3 / UBCH7 Antibody - Protocols

Provided below are standard protocols that you may find useful for product applications.

- [Western Blot](#)
- [Blocking Peptides](#)
- [Dot Blot](#)
- [Immunohistochemistry](#)
- [Immunofluorescence](#)
- [Immunoprecipitation](#)
- [Flow Cytometry](#)
- [Cell Culture](#)

### Ube2L3 / UBCH7 Antibody - Images



Western blot analysis of Ube2L3 / UBCH7 expression in Jurkat cell lysate.