

**Nck2 Antibody**  
Rabbit mAb  
Catalog # AP92865

## Specification

---

### Nck2 Antibody - Product Information

Application	WB, IHC, ICC
Primary Accession	<a href="#">O43639</a>
Reactivity	Rat
Clonality	Monoclonal
<b>Other Names</b>	
GRB4; NCK adaptor protein 2; NCK2; NCKbeta;	
Isotype	Rabbit IgG
Host	Rabbit
Calculated MW	42915 Da

### Nck2 Antibody - Additional Information

Purification	Affinity-chromatography
Immunogen	A synthesized peptide derived from human Nck2
Description	Adapter protein which associates with tyrosine-phosphorylated growth factor receptors or their cellular substrates. Maintains low levels of EIF2S1 phosphorylation by promoting its dephosphorylation by PP1.
Storage Condition and Buffer	Rabbit IgG in phosphate buffered saline , pH 7.4, 150mM NaCl, 0.02% sodium azide and 50% glycerol. Store at +4°C short term. Store at -20°C long term. Avoid freeze / thaw cycle.

### Nck2 Antibody - Protein Information

**Name** NCK2

**Synonyms** GRB4

#### Function

Adapter protein which associates with tyrosine-phosphorylated growth factor receptors or their cellular substrates. Maintains low levels of EIF2S1 phosphorylation by promoting its dephosphorylation by PP1. Plays a role in ELK1-dependent transcriptional activation in response to activated Ras signaling.

#### Cellular Location

Cytoplasm. Endoplasmic reticulum

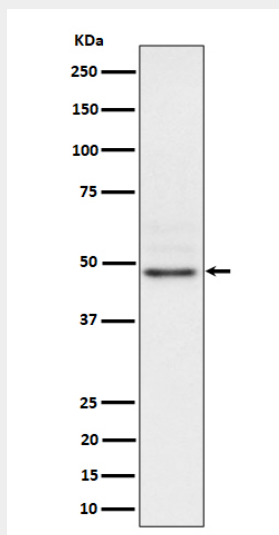
**Tissue Location**

Ubiquitous.

**Nck2 Antibody - Protocols**

Provided below are standard protocols that you may find useful for product applications.

- [Western Blot](#)
- [Blocking Peptides](#)
- [Dot Blot](#)
- [Immunohistochemistry](#)
- [Immunofluorescence](#)
- [Immunoprecipitation](#)
- [Flow Cytometry](#)
- [Cell Culture](#)

**Nck2 Antibody - Images**

Western blot analysis of Nck2 expression in SH-SY5Y cell lysate.